

HILLSIDE MINE COMMUNITY VOICE

HILLSIDE PEPR - NATIVE VEGETATION MANAGEMENT PLAN



10 JULY 2017



The objective of this Plan is to provide a framework for:

- ensuring compliance with all relevant statutory requirements and commitments;
- Rex Minerals Policies and Standards;
- implementing tools and practices to manage and minimise the potential impacts to native vegetation;
- providing the details on native vegetation responsibilities;
- providing details on the extent of vegetation clearance, significance and condition of vegetation to be cleared;
- calculate a SEB for all proposed vegetation clearance;
- provide a description on how Rex Minerals proposes to achieve SEB; and
- maintaining an effective response mechanism to deal with issues and complaints.



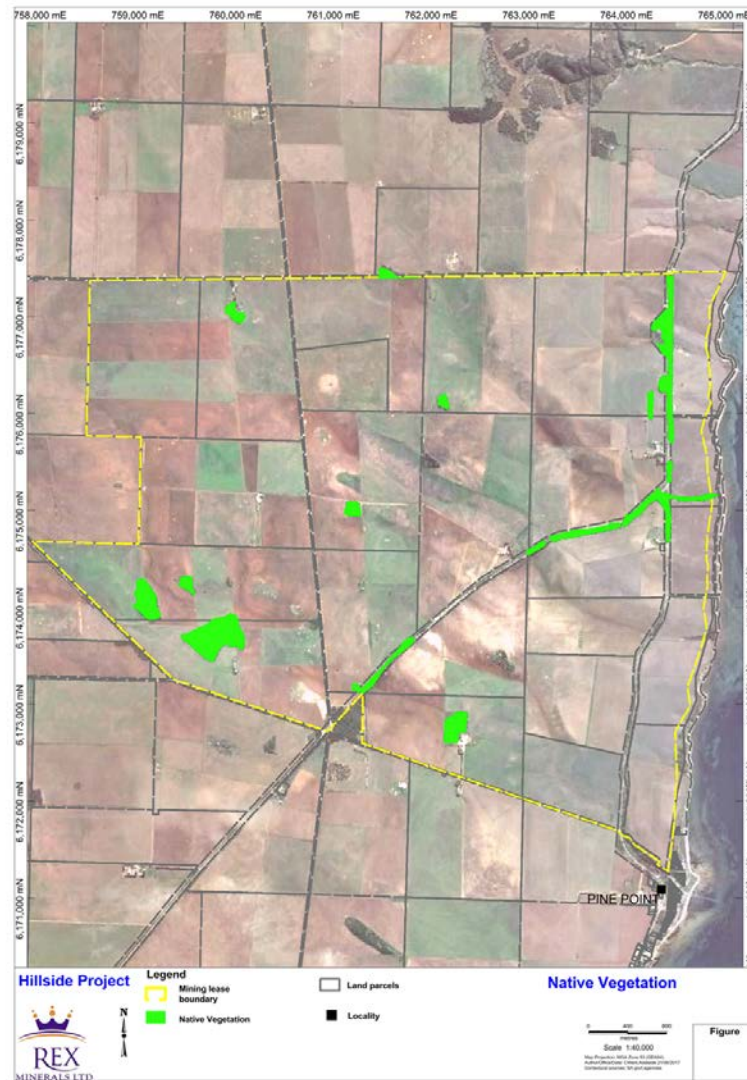
In the Hillside Mine Mining Lease conditions, there are no specific Hillside Mine ML conditions (Second Schedule) relating to native vegetation.

The following Hillside Mine ML clauses (Sixth Schedule) relate to native vegetation.

- 22 The Tenement Holder must, in construction, operation and post mine completion, ensure no loss of abundance or diversity of native vegetation on or off the Land through;
 - 22.1 clearance,
 - 22.2 dust/contaminant deposition,
 - 22.3 fire,
 - 22.4 reduction in water supply, or
 - 22.5 other damage,unless prior approval under the relevant legislation is obtained.

A baseline of native vegetation within the Hillside Mine area was compiled through studies conducted in September 2011 and July 2012 and published in the Hillside Mine ML

The ML area was largely cleared of vegetation for agricultural activities over a century ago. Isolated small patches of native vegetation, predominantly Mallee, are scattered within and surrounding the ML. Native vegetation within the ML covers approximately 6% of the area of 2,998ha, comprising of isolated inland and coastal patches and narrow roadside strips of vegetation, surrounded by agricultural land



NATIVE VEGETATION MANAGEMENT PLAN

VEGETATION TYPES WITHIN THE HILLSIDE ML



Vegetation Group	Vegetation Association	Co-dominants
Mid mallee woodland	<i>Eucalyptus gracilis</i>	<i>E. socialis</i>
	<i>E. leptophylla</i>	<i>E. phenax</i>
	<i>E. socialis</i>	<i>E. oleosa</i>
Mid open mallee woodland	<i>E. incrassata</i>	<i>E. socialis</i>
	<i>E. porosa</i>	-
Mid open mallee forest	<i>E. oleosa</i> (Minor)	<i>E. phenax</i>
Coastal mid open shrub land	Variously dominated	-

Vegetation studies found that most of the vegetation in the ML and surrounding area is of very poor to poor condition, with low species diversity and significant weed incursion. The area is generally characterised by little to no litter cover and overgrazing, and is considered to represent low habitat value.

Some native vegetation patches within the ML require clearing and/or may be impacted by mine activities. This vegetation comprises remnant patches, portions of roadside vegetation and some vegetation within drainage lines.



Proactive control measures include:

- Design and strategically place infrastructure to avoid native vegetation.
- Prepare and maintain a native vegetation map with areas to be retained / cleared.
- Erect signage and construct barriers to protect designated vegetation.
- Develop site specific vegetation clearance procedure and permit to clear system.
- Employee induction system to include inclusive of instructions on the native vegetation management system.

Active control measures include:

- Identify opportunities for collaboration with local groups on programs of mutual interest.
- Establish native vegetation on available disturbed land.
- Identify access or linking corridors between remnant patches of vegetation.
- Develop and implement a seed collection and preservation program.
- Prepare and implement a SEB offset plan in consultation with the NVC.
- Establish a progressive mine rehabilitation program.



The monitoring program has the specific objective of demonstrating achievement of the native vegetation outcomes as outlined in Section 3:

- Monthly site inspections to document progress with revegetated areas.
- Formal ecosystem function analysis (EFA) surveys for evaluating progress on Closure Criteria.

Rex will report on the Plan in the annual compliance report (ACR) and provide regular updates to the HMCV. Includes:

- Annual progress report of SEB offset, including actions and outcomes.
- Annual rehabilitation monitoring report.

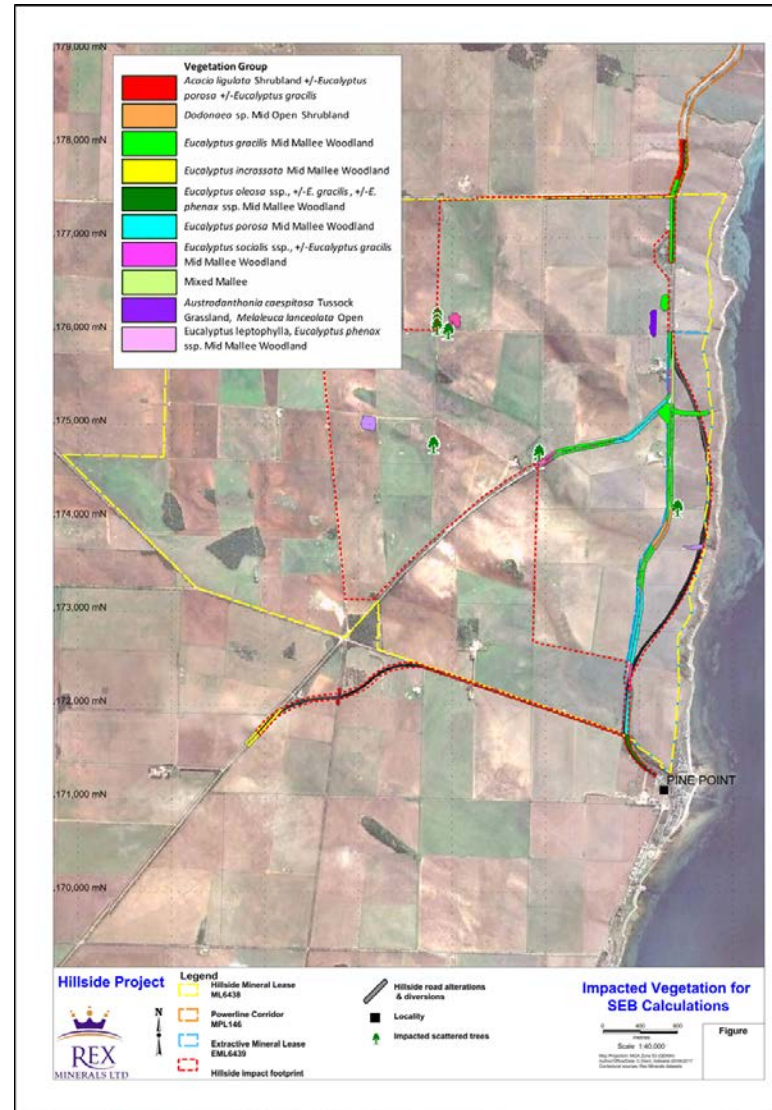
Rex has worked closely with DEWNR, Naturally Yorke (previously CAPS), Greening Australia, YPC and local groups since being in the region in support of native vegetation management and rehabilitation programs.

NATIVE VEGETATION MANAGEMENT PLAN

SEB Offset calculation



- The ML and surrounds have been extensively cleared of native vegetation.
- Retained patches mainly isolated stands of Mallee surrounded by cropping land, roadsides, coastal cliffs, and small managed reserves.
- Vegetation is generally open and of low diversity with limited vegetation in mainly poor condition.
- Stock grazing has heavily impacted upon lower strata, ground flora and emergent species.
- Hence many remnant patches are invaded by exotic species and are too small to be able to maintain viable native flora and fauna populations.
- A total of 45.01ha and eight of the 13 vegetation groups occurring in the ML area will be affected by the Hillside Mine.
- An SEB offset of 146Ha has been calculated.



NATIVE VEGETATION MANAGEMENT PLAN

SEB Offset area

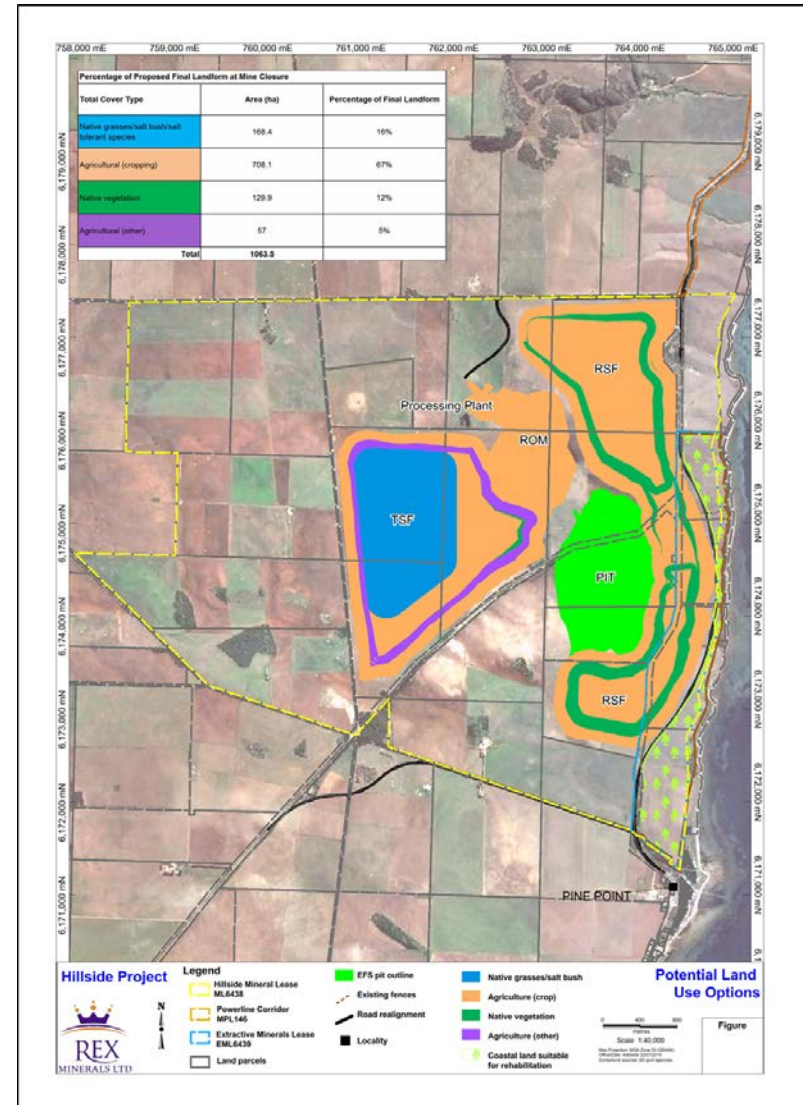


Rex Minerals proposes to meet the SEB requirements of the Hillside Mine by revegetating areas historically cleared for agricultural activities – totalling 28% of post closure landform.

Percentage of proposed final landform at closure:

- Agricultural (cropping): 67%
- Native salt tolerant shrubs & grasses: 16%
- Native vegetation: 12%
- Agricultural (other): 5%

Refer to map at right and Management Plan for detail of SEB offset calculation, environmental benefit, offset area location.





STAY IN TOUCH

Website: www.rexminerals.com.au

Email: community@rexminerals.com.au

A: PO Box 3435 Rundle Mall SA 5000

T: +61 (0) 8 82997100

E: rex@rexminerals.com.au