



Hillside Mine Community Voice, 3 April 2017
Blast Management & Monitoring Plans

Blast Management & Monitoring Plans

types of impacts

Vibration through the air (overpressure)

- Is the pressure caused by a blast-generated shock wave over and above normal atmospheric pressure. It is measured in decibels.
- Air overpressure is often below the range of human hearing

Earth (ground vibration)

- Measured as vibration velocity (in mm/s) and frequency (Hz)

Flyrock

- Requires an exclusion zone

Generation of dust and fume

- Refer to Dust management Plan

Blast Management & Monitoring Plans

objectives

- Ensure all relevant statutory requirements and Rex Minerals Policies and Standards are met;
- Manage and minimise the impact of blasting from mining operations on the environment and nearby residences;
- Maintain an effective response mechanism to deal with issues and complaints; and
- Ensure the results of blast monitoring comply with applicable criteria.

Blast Management & Monitoring Plans

control Measures

- pre-blast environmental assessment, considering wind speed, direction, and meteorological conditions
- use initiation systems that minimise vibration
- use adequate stemming lengths and quality, to ensure maximum confinement of explosive charges minimising fly-rock and overpressure
- use suitable stemming material
- ensure adequate burden is present on all faces
- adhere to blast loading and initiation designs

Blast Management & Monitoring Plans

measurement criteria

Blasting criteria derived from AS2187.2 – 2006, Australian Standard “Explosives- Storage, transport and use Part 2: Use of explosives” (AS2187.2).

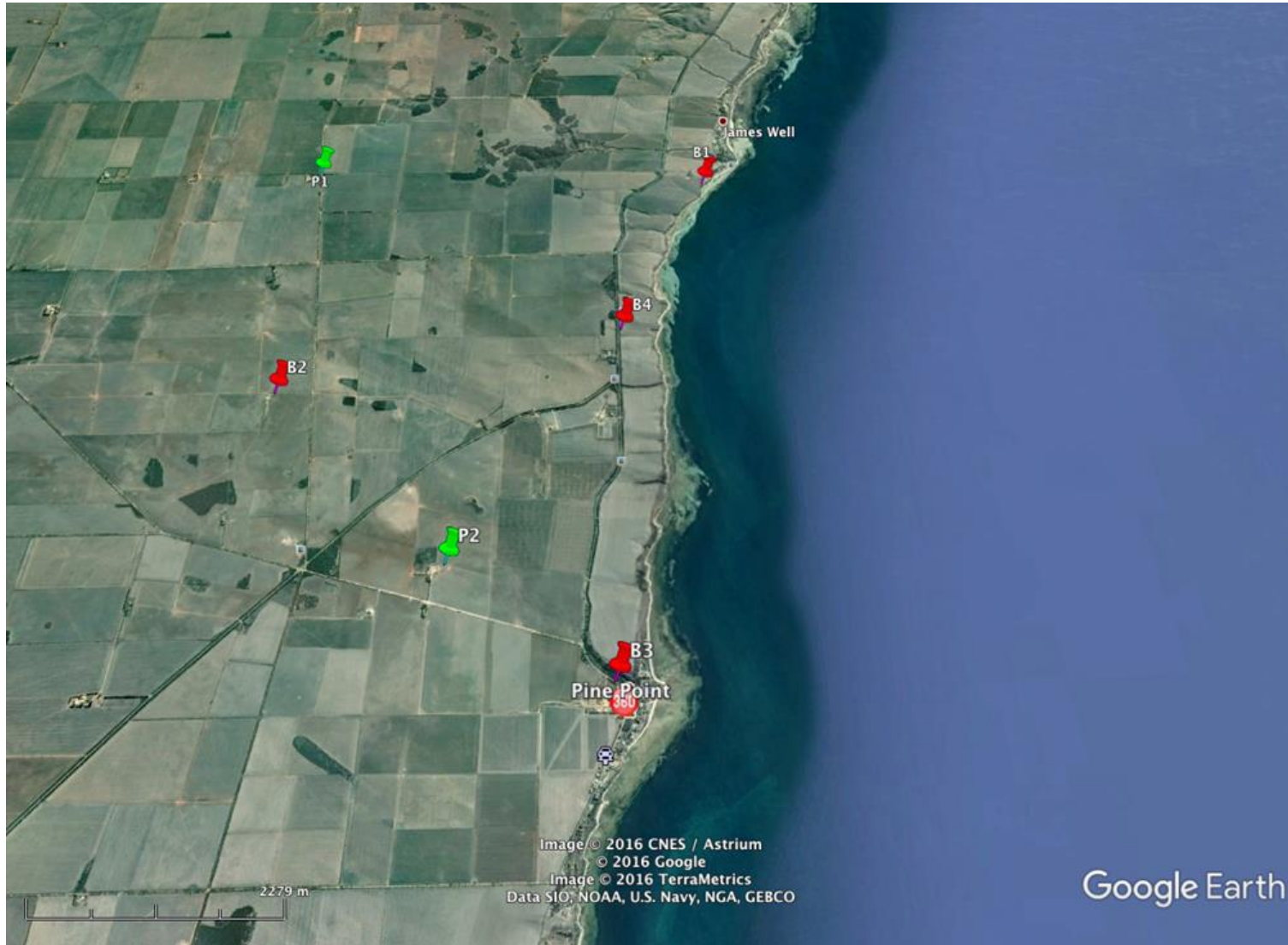
Vibration criteria for the Hillside mine at residential premises

Parameter	Limits
Ground Vibration	5mm/s PPV for 95% blasts per year, 10mm/s PPV maximum unless agreement is reached with the occupier that a higher limit may apply.
Air Overpressure	115 dB(Lin) for 95% blasts per year, 120 dB(Lin) maximum unless agreement is reached with the occupier that a higher limit may apply.

Vibration criteria for commercial and industrial buildings or structures

Parameter	Limits
Ground Vibration	25mm/s PPV maximum.

Suggested monitoring locations



Blast overpressure monitoring station

with solar panel power supply & aerial for data transmission



Contact details

Website: www.rexminerals.com.au

Email: community@rexminerals.com.au