



Directory of Services for Young People and Families

within the Yorke Peninsula Council

Prepared by the

**Southern Yorke Community
Partnership Steering Group**

A sub-committee of the Southern Yorke Peninsula Partnership of
Department for Education and Child Development schools

February 2016

The information on this Directory is provided for general information purposes only. Readers are responsible for assessing the information and are advised to verify all relevant statements and information and obtain independent advice before acting on any information obtained from, or in connection with, this directory.

The SYP Partnership has made every effort to ensure the accuracy of the information contained in this directory however, the SYP Partnership makes no claim as to the accuracy of the information. The information in this directory will not bind SYP Partnership, nor will it accept any liability for any loss or damage which may be incurred by any person acting on reliance of the information.

Links to other websites or information sources are provided as a courtesy, however, the SYP Partnership cannot accept responsibility for unsuitable, incomplete or inaccurate information that may be encountered at these linked websites.

To notify the SYP Partnership of errors or changes to information, or if you have suggestions about the content on the directory, please to provide information to your local DECD School.

Complaints or suggestions about a particular service you have used should be made to the specific service. Please contact the service directly and lodge your complaint or suggestion with them.

An online version of this directory will be available in 2016 on the Yorke Peninsula Council website
www.yorke.sa.gov.au

CONTENTS

Introduction	8
The Common Approach	9
<i>PHYSICAL HEALTH</i>	11
<u>ABORIGINAL HEALTH SERVICES</u>	<u>11</u>
Aboriginal Drug and Alcohol Council	11
Aboriginal Family Support Service- Children & Youth	11
Aboriginal Health Council of SA	11
Aboriginal Health Team—Country Health SA	11
<u>CHILDREN’S HEALTH SERVICES</u>	<u>11</u>
Australian Breastfeeding Association Helpline	11
Child and Family Health Service (CaFHS) - Health SA	11
Child and Family Health Services (CaFHS) – Early Childhood Intervention Program—Health SA	11
Country Health SA—Healthy Families Team	12
Integrated Support Services—DECD Hearing	12
Women's and Children's Health Network Parent Helpline	12
<u>DENTISTS</u>	<u>13</u>
Ardrossan Community Health Centre—Dentist	13
Bill Hackett	13
Minlaton Dental, Denture & Specialist Centre	13
SA Dental Service Maitland Dental Clinic	13
Yorke Peninsula Dental	13
<u>DISABILITY SUPPORT</u>	<u>13</u>
Disability SA	13
Novita Children’s Services—Regional Service	13
<u>GENERAL HEALTH SERVICES</u>	<u>13</u>
Ardrossan Community Health Centre	13
Better Care in the Community — Maitland Campus	13
<u>HOSPITALS</u>	<u>13</u>
Ardrossan Community Hospital	13
Country Health SA—Hospital and Casualty	13
<u>MEDICAL CENTRES</u>	<u>14</u>
Ardrossan Medical Centre	14
Medical HQ Maitland	14
Minlaton Medical Centre	14
Yorke Peninsula Medical Practice	14
<u>NUTRITION</u>	<u>14</u>
Core Health & Nutrition	14
Country Health SA— Dietician	14
<u>OCCUPATIONAL THERAPISTS</u>	<u>14</u>
Country Health SA— Occupational Therapists as part of Healthy Families Team	14
Yorke Peninsula Occupational Therapy (YPOT)	14
<u>PHYSIOTHERAPISTS</u>	<u>15</u>
Ardrossan Community Health Centre	15
Country Health SA—Physiotherapist	15
SYP Physio	15

SEXUAL HEALTH SERVICES	15
SA Health—Clinic 265	15
SA Health—Pregnancy Advisory Centre	15
SA Health—Yarrow Place Rape and Sexual Assault Service	15
ShineSA	15
SPEECH PATHOLOGISTS	16
Integrated Support Services—DECD Speech & Language Pathologist	16
Leonie Martin Speech Pathologist	16
Jody Koch Speech Pathologist	16
MENTAL & EMOTIONAL HEALTH	17
CARERS SUPPORT	17
<i>Carers Link Yorke Peninsula</i>	17
Uniting Communities	17
COUNSELLING	17
Centacare Catholic Family Services Country SA	17
FAMILIES SA	17
GENERAL MENTAL HEALTH SERVICES	18
Child and Adolescent Mental Health Services (CAMHS)	18
Country Health SA - Yorke Peninsula Community Mental Health Team/ Youth Mental Health Service	18
UnitingCare Wesley Country SA—Personal Helpers and Mentors	18
PSYCHOLOGISTS	18
Integrated Support Services—DECD Psychologist	18
Sally Emery Psychologist	19
Shrinkwrap Psychology	19
Stop Think Do—Child, Clinical & Family Psychologist	19
SOCIAL WORKERS	19
Country Health SA—Social Worker	19
Country Health SA—Youth Social Worker	19
Integrated Support Services—DECD Social Worker	19
RELATIONSHIPS	21
ABORIGINAL SPECIFIC SUPPORT	21
Aboriginal Affairs and Reconciliation	21
Council of Aboriginal Elders of SA (CAESA)	21
COUNTRY WOMEN'S ASSOCIATION (CWA)	21
MISCELLANEOUS GROUPS	21
Stansbury Community Craft & Friendship	21
PROGRESS ASSOCIATIONS	21
SERVICE CLUBS/GROUPS	22
TIDY TOWNS GROUPS	22
YOUTH GROUPS	22
Ardrossan Kids' Club	22
Combined Churches Youth	23
Edithburgh Youth	23

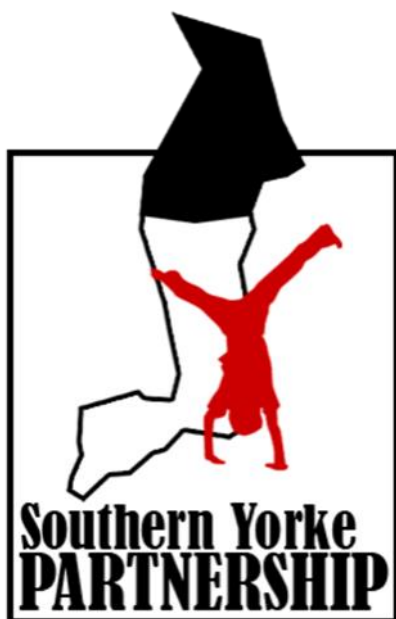
Stansbury Community Church Youth Group	23
<i>MATERIAL BASICS</i>	24
<u>ASSISTANCE TO FIND EMPLOYMENT</u>	<u>24</u>
Career Services Yorke & Mid North	24
Interwork Part of Wise Employment	24
MADEC Employment and Training	24
Personnel Placement Consultancies Pty Ltd	24
Re-engage Youth Services	25
Sureway	25
UnitingCare Wesley Country SA—Disability Employment Service	25
Yorke Youth Services	25
<u>CENTRELINK</u>	<u>25</u>
<u>COMMUNITY CENTRES</u>	<u>25</u>
Maitland Information Centre	25
SYP Telecentre	26
<u>COUNCIL</u>	<u>26</u>
<u>FINANCE SUPPORT</u>	<u>26</u>
Anglicare SA	26
UnitingCare Wesley Country SA—Commonwealth Financial Counselling	26
UnitingCare Wesley Country SA—Gambling Counselling	26
UnitingCare Wesley Country SA—Microcredit Loans	26
<u>FOOD & CLOTHING</u>	<u>27</u>
Meals on Wheels	27
St Vincent DePaul Society	27
<u>HOUSING SUPPORT</u>	<u>27</u>
HomeCare+	27
Housing SA	27
UnitingCare Wesley Country SA—Yorke and Mid North Generic Homelessness Service	27
<u>MISCELLANEOUS</u>	<u>27</u>
Youth Affairs Council of South Australia Inc (YACSA)	27
<u>TRANSPORT</u>	<u>28</u>
YP Community Transport	28
YP Coaches	28
<i>LEARNING</i>	29
<u>ACTIVITIES FOR YOUNG CHILDREN & FAMILIES</u>	<u>29</u>
Early Childhood Initiative Group	29
Central Yorke Peninsula birth-5 year old activities	30
Scouts SA	30
<u>CHILD CARE OPTIONS</u>	<u>30</u>
Family Day Care	30
Occasional Care at Ardrossan Kindergarten	30
Occasional Care at Minlaton District Early Learning Centre	30
Rural Care at Maitland Children's Centre	30
Rural Care at Yorketown Children's Centre	30
<u>DEPARTMENT FOR EDUCATION & CHILD DEVELOPMENT REGIONAL SERVICES</u>	<u>31</u>
Aboriginal Services	31

Learning Together at Home	31
Student Engagement & Community Partnerships Coordinator	31
Student Support Services	31
DISABILITY SUPPORT	32
Disability SA	32
Novita Children's Services—Regional Service	32
YP Leisure Options	32
LIBRARIES	32
Ardrossan Community Library	32
Central Yorke Community Library	32
Minlaton Community Library	32
Yorke town School Community Library	32
PARENTING SUPPORT	33
UnitingCare Wesley Country SA—Children and Parent Support Services	33
UnitingCare Wesley Country SA—JET Crèche	33
Women's and Children's Health Network Parent Helpline	33
SCHOOLS & PRESCHOOLS	34
Ardrossan Area School	34
Ardrossan & Districts Community Kindergarten	34
Curramulka Primary School	34
Edithburgh Primary School	34
Maitland Area School	34
Maitland Children's Centre & Rural Care	34
Maitland Lutheran School	34
Minlaton District Early Learning Centre	34
Minlaton District School	34
Point Pearce Aboriginal School	34
Port Vincent Primary School	34
St Columba's Memorial School	34
Stansbury Primary School	34
Warooka Primary School	34
Yorke town Area School	34
Yorke town Community Children's Centre	34
SPORTING CLUBS	34
Archery	34
Basketball	34
Bowls	34
Cricket	35
Community Clubs	35
Football	35
Golf	35
Gun Clubs	36
Hockey	36
Indoor Soccer	36
Kayaking	36
Motorbikes	36
Music/Theatre	36
Netball	36
Polocrosse	37
Pony Club SA	37
Sailing	37
Surfing	37
Table Tennis	37

Taekwondo	37
Tennis	37
Yoga	37
TRAINING PROVIDERS	38
Accustom Consulting (Driving School & Training Centre)	38
MADEC Employment and Training	38
Re-engage Youth Services	38
Regional Skills Training (RST)	38
TAFE SA—Kadina Campus	38
Tauondi College	38
Yorke Youth Services	38
<i>SAFETY</i>	39
ABORIGINAL SPECIFIC SUPPORT	39
Aboriginal Legal Rights Movement	39
Aboriginal Prisoners and Offenders Support Services	39
COUNTRY FIRE SERVICE (CFS)	39
FAMILIES SA	39
FAMILY SUPPORT	39
UnitingCare Wesley Country SA—Mid North Family Support Program	40
UnitingCare Wesley Country SA—Reunification	40
UnitingCare Wesley Country SA—Targeted Intervention	40
UnitingCare Wesley Country SA—Yorke and Mid North Domestic Violence Service	40
MISCELLANEOUS	40
Victim Support Service Inc.	40
SA POLICE	41
STATE EMERGENCY SERVICES	41

INTRODUCTION

Welcome to the directory of services for young people and families within the Yorke Peninsula Council area developed by the Southern Yorke Community Partnership Steering Group.



The **Southern Yorke Community Partnership (SYCP) Steering Group** is in its infancy and was formed after the Southern Yorke Peninsula Partnership of public schools held a Community Partnerships Planning forum in late 2014 where stakeholders in the wellbeing of children and young people were invited to plan joint actions that will improve the health and wellbeing and education outcomes for children and young people in our community.

The SYCP Steering Group is “*working to improve the wellbeing of the Southern Yorke Peninsula Community*”. The SYCP Steering Group currently includes members from Department of Education and Child Development (DECD) Yorke Peninsula Schools and Preschools, Department of Education and Child Development, Country Health SA, Health SA and Yorke Peninsula Council. **The Steering Group welcomes new members** who wish to support the objectives of the group.

Southern Yorke Peninsula Partnership of DECD schools include: Ardrossan Area School, Ardrossan and District Community Kindergarten, Curramulka Primary School, Edithburgh Primary School, Maitland Area School, Maitland Children’s Centre and Rural Care, Minlaton District School, Point Pearce Aboriginal School, Port Vincent Primary School, Stansbury Primary School, Warooka Primary School, Yorketown Area School and Yorketown Community Children’s Centre.

In 2015, the SYCP Steering Group has focused on “*developing collaborative strategies which support improved outcomes for children, young people and families across the Southern Yorke Peninsula by:*

- a) *Developing a deeper understanding of the date*
- b) *Engaging key services*
- c) *Engaging parents and building the capacity of service providers”*

A key focus in 2015 has been to map existing services available to young people and families on the Yorke Peninsula and this directory is the first version of this.

The directory uses Common Approach wellbeing domains, developed by the Australian Research Alliance for Children and Youth (ARACY), to present the information. The Common Approach is a practical and flexible way of improving the wellbeing of children, youth, and families which is explained in more detail in the following section.

SYCP Steering Group understands that it is near impossible to incorporate ALL services into a hard copy directory so we have developed this hard copy version as a start and then in 2016 we will develop an online version where details can be added, updated, deleted and changed that will be available on the Yorke Peninsula Council website www.yorke.sa.gov.au.

We hope you find this directory useful and if you have any comments, feedback, changes or additions please contact your nearest DECD school and they will forward your comments onto the Southern Yorke Community Partnership (SYCP) Steering Group.

Southern Yorke Community Partnership Steering Group

THE COMMON APPROACH

About Australian Research Alliance for Children and Youth

The Australian Research Alliance for Children and Youth (ARACY) has developed The Common Approach and provides training with accompanying resources. ARACY works to improve child and youth wellbeing in Australia, through collaborations with policy makers, practitioners and researchers from various disciplines. We turn the evidence on 'what works' for child and youth wellbeing into practical, preventative action to benefit all young Australians. ARACY's work is organised around its flagship initiative, *The Nest*.

This national action plan outlines a vision and a set of shared outcomes and measurements for child and youth wellbeing in Australia to help mobilise and align the efforts of diverse stakeholders, including ARACY's 4,000 members. This builds on the founding idea that the complex issues affecting young Australians can't be solved by one individual or organisation working in isolation.

About The Common Approach

The Common Approach is a framework to help professionals working with children and families. The integrated suite of Common Approach resources helps practitioners to look beyond the usual focus of their profession, allowing them to have a conversation with a child or family about issues they might not usually be confident to discuss, before problems turn into crises.

The Common Approach takes a holistic view of child and family wellbeing. It provides a common language for practitioners from various disciplines, helping them to stay focused on the needs of the child, the strengths of the family and the importance of working in partnership with the family and in collaboration with other service providers.

The Common Approach can help in:

- assisting in identifying and verifying early signs that a child or family needs support;
- increasing practitioners' awareness of their role in the prevention of abuse and neglect;
- assisting practitioners to think holistically about the strengths and needs of the child and family; and
- assisting in the provision of support to children and families, before problems escalate into crises.

The Common Approach is underpinned by four evidence-based practice principles:

1. A **holistic** understanding of the strengths and needs of children and their families, grounded in the ecological model of child development.
2. A **strengths-based** approach that focuses on wellbeing and building on the strengths of families to help address areas of need.
3. A primary focus on the **wellbeing** of young people.
4. Working in **partnership** with families to build their capacity and link them with the formal and informal support and services they need to thrive.

The Common Approach is a framework to help professionals in first contact with kids to have a conversation with a family or young person when there are signs they might benefit from extra help.

The Common Approach was designed for use in a broad range of service contexts and across the range of sectors that work with young people and their families. To date, it has been used in the early childhood education, family support, mental health, family relationships, health, and education sectors.

Users of the Common Approach include: Child and family health, adolescent health and school nurses; family support workers; young parents support services; school counsellors/chaplains; social workers; early childhood educators; playgroup facilitators; school health teachers; transition to school programs; youth workers; midwives; general practitioners and intake and assessment teams.

Adopting the Common Approach

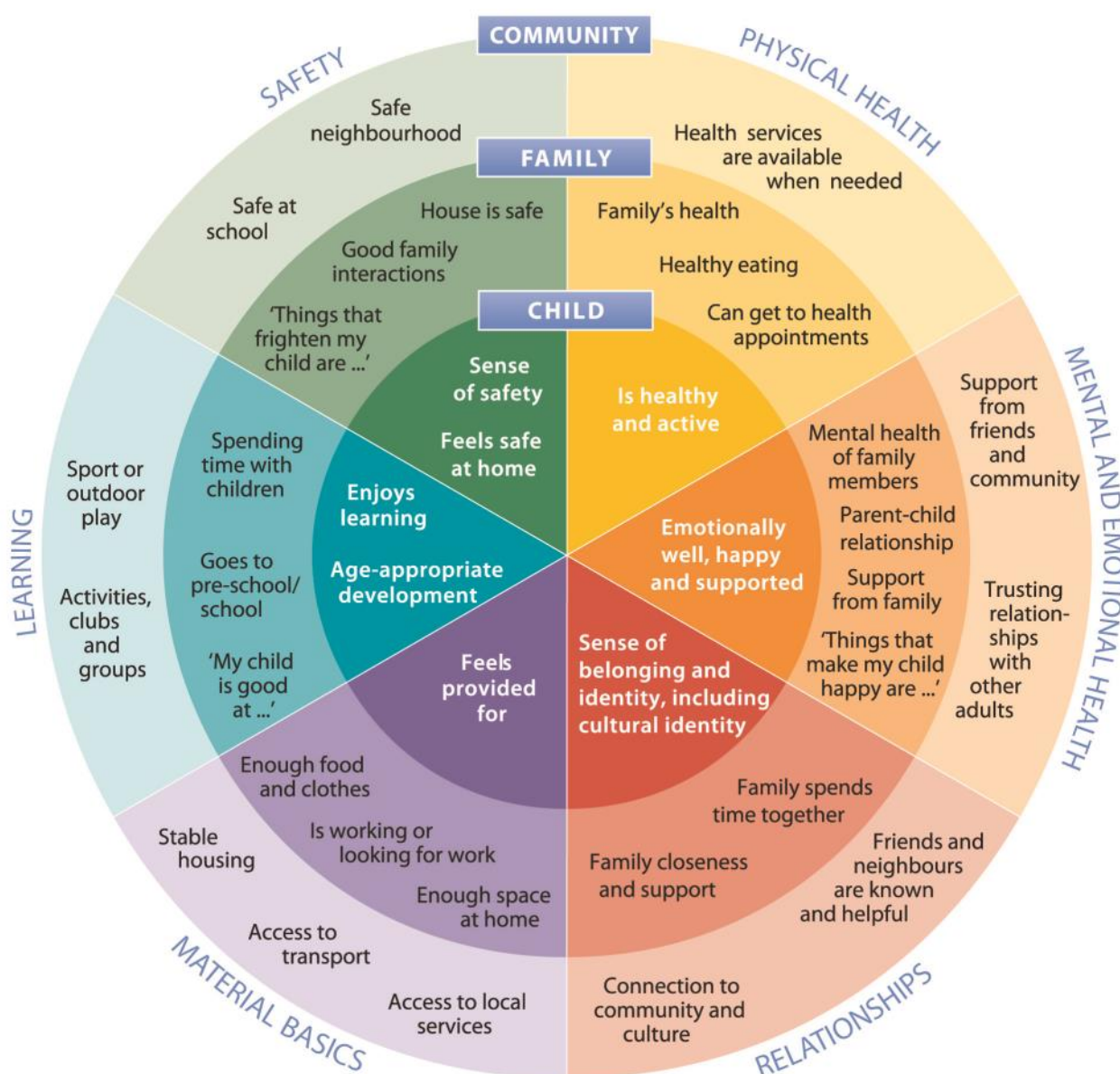
ARACY delivers training for individuals and organisations interested in building their capacity around the Common Approach practice principles – strengths-based, holistic child-focused partnerships with families. The training also provides a familiarisation of the Common Approach resource kit.

Visit www.aracy.org.au for more information regarding training.

The information presented in the Directory of Services for Young People and Families within the Yorke Peninsula Council has been broken down into the six domains of the Common Approach wellbeing wheel:

- Physical Health
- Mental and Emotional Health
- Relationships
- Material Basics
- Learning
- Safety

to aid users to find services where a young person or a family has a need.



Visit www.aracy.org.au for more information regarding training.

ABORIGINAL HEALTH SERVICES

Aboriginal Drug and Alcohol Council

Phone: 8351 9031
Address: 155 Holbrooks Rd, Underdale SA 5032
Website: www.adac.org.au
Services:

To ensure the development of effective programs to reduce harm related to substance misuse in Aboriginal communities, in such a way as to: promote and foster pride, dignity, identity and achievement in Aboriginal society, and advocate and actively pursue the philosophy and principles of Aboriginal spiritual, cultural, social, economic and political re-empowerment, self-determination and self-management.

Aboriginal Family Support Service-Children & Youth

Phone: 8205 1500
Address: 134 Waymouth St, Adelaide SA 5000
Email: afss@afss.com.au
Website: www.afss.com.au
Services:

Foster care, stronger families, residential care, gambling help service, youth accommodation, cultural competency and youth support.

Aboriginal Health Council of SA

Phone: 8273 7200
Email: ahcsa@ahcsa.org.au
Address: 9 King William Rd, (PO Box 981) Unley SA 5061

Services:
 AHCSA Objectives are: Operate as the peak body for Aboriginal health in South Australia; improve the health outcomes for all Aboriginal people of South Australia, promoting and advancing the community's commitment to physical, social and emotional wellbeing and quality of life; build the capacity of members to create a strong and enduring Aboriginal Community Controlled health sector and contribute to improving the capacity of mainstream health services to respond appropriately to the health needs of the Aboriginal community of South Australia and contribute to the development of a well-qualified and trained Aboriginal health sector workforce.

Aboriginal Health Team—Country Health SA

Phone: Maitland 8832 2050
 Moonta 8825 2690
 Point Pearce 8836 7274
Address: 36 Robert St, Maitland SA 5573
 54 George St, Moonta SA 5558
 Parry's Ave, Point Pearce SA 5573

Services:

The Aboriginal health team works with local Aboriginal communities to improve their health and well being. They advise, inform and refer to mainstream services. They also provide health screening, diabetes care, counselling, and assist health workers to understand the needs and culture of the Aboriginal community.

Hours: Medical Clinic Wednesdays in Moonta Medical Clinic in Point Pearce Tuesday and Thursday. Aboriginal Liaison for hospital admission & advocacy

Referral: Self refer, walk-in

CHILDREN'S HEALTH SERVICES

Australian Breastfeeding Association Helpline

Phone: 1800 686 268
Website: www.breastfeeding.asn.au
Services:

The Australian Breastfeeding Association (ABA) runs the National Breastfeeding Helpline 1800 mum 2 mum (1800 686 268). The Breastfeeding Helpline is available 7 days a week. It is staffed by trained, volunteer counsellors who answer calls on a roster system in their own homes.

Fee: Nil

Referral: self referral

Child and Family Health Service (CaFHS)—Health SA

Phone: 1300 733 606 appointments
 1300 364 100 parent helpline
Address: Centres at Minlaton and Maitland with clinics at Yorketown, Warooka.
Website: www.cyh.com.au
Services:

Parenting & family support offering health checks for babies and toddlers 0-5years to monitor growth & development. This is performed through universal contact visits, clinics, family home visiting program, day service and parenting groups.

Fee: Nil

Referral: self referral via 1300 364 100

Child and Family Health Services (CaFHS) – Early Childhood Intervention Program—Health SA

Phone: 8821 2510
Address: 2 Mine St, Kadina SA 5554
Email: sharee.cock@health.sa.gov.au
Website: www.cyh.com/SubContent.aspx?p=142
Contact: Sharee Cock—Early Childhood Intervention Coordinator

Services:

The Early Childhood Intervention Program is for parents of children aged 0-8 years of age, who are concerned about their child's development and may need special help. The concerns could include difficulties with communication, coordination, hand skills, self-help skills, behaviour, vision or hearing, learning difficulties or complex health needs. A range of support and advice is available for parents such as information about services and support groups in your area; assistance to help you access services and benefits; support and assistance when you are dealing with agencies or organisations concerning services for children with special needs; promotion of links between agencies providing services for your child to ensure hassle free transfer/attention.

Service area: Yorke Peninsula

Hours: Mondays

Fees: Nil

Referral process: Can self refer

Country Health SA—Healthy Families Team

Phone: 8828 1360

Address: 9 South Tce, Minlaton SA 5575

Eliza Tce, Kadina SA 5554

Services provided in other locations according to location of clients

Website: <http://www.sahealth.sa.gov.au/wps/wcm/connect/public+content/sa+health+internet/health+services/hospitals+and+health+services+-+country+south+australia/yorke+and+mid+north+hospitals+and+health+services>

Services:

Allied health services to support early childhood development, including speech pathology, physiotherapy, occupational therapy, dietetics, & social work. Focus on children up to the age of four and their families, but services can be provided up for children up to the age of eight.

Service area: Yorke Peninsula

Referral: Country Referral Unit 1800 003 307

Integrated Support Services—DECD Hearing

Phone: 8821 2555

Address: 45 Taylor St, Kadina SA 5554

Website: www.decd.sa.gov.au

Services:

Special Educator (Hearing)

FOCUS: Learners K-12 who are deaf or hard of hearing & their families.

FUNCTIONS:

- Identification of needs in educational contexts

- Provision of specialist advice at individual, group, whole site levels.
- Contribute to NEP, provide reports and recommendations (hearing devices, acoustic environment), case work management (active, review, close), case coordination
- Development and provision of training and development to staff and families; modelling and provision of information strategies and resources

Service area: DECD Schools on the Yorke Peninsula

Hours: Mon-Fri 9am-5pm

Referral: Via School only. Pre-referral with service provider and electronic referral by school through EDSAS or Early Years System.

Service area: DECD Schools on the Yorke Peninsula

Hours: Mon-Fri 9am-5pm

Referral: Via School only. Pre-referral with service provider and electronic referral by school through EDSAS or Early Years System.

Women's and Children's Health Network Parent Helpline

Phone: 1300 364 100

Website: www.cyh.com.au

Services:

The Women's and Children's Health Network (WCHN) Parent Helpline provides telephone information and support at any time 7 days a week (calls received between 7.15am - 9.15pm will be answered by local Parent Helpline staff; calls received outside these hours will be automatically redirected to the national *healthdirect* helpline).

- It is available to parents of children from birth to 12 years who live anywhere in South Australia.
- It provides information about health, behaviour and relationships for parents and people working with children and young people.
- It is able to provide information to callers on where to go for further help.
- Calls are confidential and you don't have to give your name unless you wish to.
- Parent Helpline staff have an information database based on the latest research, so they can give you the most up-to-date information when you call.
- Staff are qualified nurses, social workers, community health workers and selected volunteers. All staff receive ongoing training and support.

Some examples of the information available from the WCHN Parent Helpline are:

- **Health:** head lice, infectious diseases, immunisation, teething, bedwetting, cold sores,

- gastro and fevers.
- **Behaviour:** aggression, sibling rivalry, problem solving, toilet training, sleep, lying, stealing, unsettled babies, school refusal, bullying.
 - **Nutrition:** feeding babies, fussy eaters, general nutrition information.
 - **Parenting:** building self esteem, grief and separation, resources for counselling, stepfamilies, child protection issues.
 - **Parents:** postnatal depression, pregnancy, mastitis, coping with parenting, support.

DENTISTS

Ardrossan Community Health Centre—Dentist

Phone: 8837 3069
Address: 30 Fifth St, Ardrossan SA 5571
Website: <http://ardrossanhospital.com.au/health-centre/>

Bill Hackett

Phone: 8852 1357
Address: 15 Edithburgh Rd, Yorketown SA 5576
Services:
 General dentistry, School Dental, cosmetic dentistry

Minlaton Dental, Denture & Specialist Centre

Phone: 8853 2268
Address: 1 Main St, Minlaton SA 5575

SA Dental Service Maitland Dental Clinic

Phone: 8832 2254
Address: Maitland Area School Junction Rd, Maitland SA 5573
Website: <http://www.sahealth.sa.gov.au/wps/wcm/connect/public+content/sa+health+internet/health+services/dental+services/dental+services?contentid=4a27d90041401356bbc2bf872aebd40d&usedefaulttext=0&usedefaultdesc=1>

Yorke Peninsula Dental

Phone: 8832 3114
Address: 69 Robert St, Maitland SA 5573

DISABILITY SUPPORT

Disability SA

Phone: 8821 0200
Address: 4A Draper St, Kadina SA 5554
Website: www.dcsi.sa.gov.au

Novita Children's Services—Regional Service

Phone: 8243 8343
Address: 171 Days Rd, Regency Park SA 5010
Website: www.novita.org.au

GENERAL HEALTH SERVICES

Ardrossan Community Health Centre

Phone: 8837 3069
Address: 30 Fifth St, Ardrossan SA 5571
Website: <http://ardrossanhospital.com.au/health-centre/>
Services:

Dental, Physiotherapist, podiatrist, chiropractor, audiology, allied health workers, specialists.

Better Care in the Community — Maitland Campus

Phone: 8823 0130
Address: 65 Roberts St, Maitland SA 5573
Email: Nikki.adams@health.sa.gov.au
Contact: Nikki Adams (ACSC) Associate Clinical Service Coordinator

Services:
 Clinical nurses trained in cardiac, respiratory including asthma, diabetes through chronic condition self-management, education and information.

Service area: Maitland

Hours: Business hours Tuesday and Thursday

Fees: Nil

Referral: Self, family, Health care provider, GP and specialist

HOSPITALS

Ardrossan Community Hospital

Phone: 8837 3021
Address: 37 Fifth St, Ardrossan SA 5571
Website: www.ardrossanhospital.com.au
Services:

Ardrossan Community Hospital Inc. is an acute medical hospital comprising of 22 bed license and a 24 hour accident emergency.

Country Health SA—Hospital and Casualty

Phone: Maitland Hospital 8832 0100
 Minlaton Casualty 8853 2200
 Yorketown Hospital 8852 1200
Address: 65 Robert St, Maitland SA 5573
 7 South Tce, Minlaton SA 5575
 19 Waterloo Bay Rd, Yorketown SA 5576

Website: <http://www.sahealth.sa.gov.au/wps/wcm/connect/public+content/sa+health+internet/health+services/hospitals+and+health+services+-+country+south+australia/yorke+and+mid+north+hospitals+and+health+services>

Services:

Emergency and hospital services

Service area: Yorke Peninsula

Hours: Yorketown, Maitland and Minlaton
All 24 hour services

Fees: The on-call doctors are private general practitioners and at some hospitals the doctors require payment of a gap fee. Please bring your Medicare card and concession cards when accessing emergency services.

Referral: Ring 000 for ambulance in life threatening emergencies, as doctors are on-call

MEDICAL CENTRES

Ardrossan Medical Centre

Phone: 8837 3837

Address: 10 Second St, Ardrossan SA 5571

Medical HQ Maitland

Phone: 8832 2185

Address: 69 Robert St, Maitland SA 5573

Minlaton Medical Centre

Phone: 8853 2001

Address: 7 South Tce, Minlaton SA 5575

Yorketown Medical Practice

Phone: 8852 1002

Address: 23 Waterloo Bay Rd, Yorketown SA 5576

NUTRITION

Core Health & Nutrition

Phone: 0418 820 730

Address: 8 Cane Ave, Ardrossan SA 5571

Email: jamelsworthy@bigpond.com

Services:

Kiddy kitchen/ cooking workshops/ healthy eating classes for adults/teenagers (nutritional advice)

Service area: Ardrossan & YP

Referral: Phone/email

Country Health SA— Dietician

Phone: 8853 2308

Services:

Dietetic services for diagnosed diet-related conditions

Service area: Yorke Peninsula

Fees: Diagnosed dietary-related conditions only

Referral: Country Referral Unit 1800 003 307

OCCUPATIONAL THERAPISTS

Country Health SA— Occupational Therapists (as part of Healthy Families Team)

Phone: 8828 1360

Address: 9 South Tce, Minlaton SA 5575
Eliza Tce, Kadina SA 5554

Services provided in other locations according to location of clients:

Allied health services including occupational. Focus on children up to the age of four and their families, but services can be provided up for children up to the age of eight.

Service area: Yorke Peninsula

Referral: Country Referral Unit 1800 003 307

Yorke Peninsula Occupational Therapy (YPOT)

Phone: Janine 0439 897 087

Georgie 0439 808 779

Address: Po Box 147, MAITLAND SA 5573

Email: admin@ypot.com.au

Website: www.ypot.com.au

Contact: Janine Burrows and
Georgie Southwood

Services:

We are a private provider of occupational therapy services. We work with people across the lifespan, from birth to death with the aim of our intervention to maximise a client's independence and enhance their living quality. When working with children and families we can provide:-

- Assessments and treatment of children who may have
- a delay in their development, co-ordination problems, fine or gross motor issues, visual perception difficulties, sensory processing problems, handwriting difficulties, self-care or difficulties with daily living tasks, a diagnosis which affects their functioning, e.g. Autism, Down syndrome, mild to moderate level cerebral palsy, or mental health issues.
- Home program development to assist parents, families and care givers in their own environment
- Development of programs for kindergartens and schools to assist the child within their learning environments.
- Home safety assessments for equipment and assistive aides recommendations, and minor modifications and major home modification recommendations.

Service area: Yorke Peninsula and will generally travel to see clients (please note travel will be

charged)

Hours: Our hours can be negotiated to suit client needs Monday – Friday, generally 8:30am -5:30pm.

Fees: Our services can be funded privately, by Medicare (if OT indicated in GP Care plan), private health funds or by the NDIS, for eligible children. As a private provider we charge \$95 per hour, hence in some circumstances a gap payment may be required on top of Medicare benefits.

Referral: Our referral form is downloadable via our website, www.ypot.com.au. We will also happily discuss referrals over the phone.

PHYSIOTHERAPISTS

Ardrossan Community Health Centre

Phone: 8837 3069

Address: 30 Fifth St, Ardrossan SA 5571

Website: <http://ardrossanhospital.com.au/health-centre/>

Services: Includes Physiotherapist

Country Health SA—Physiotherapist

Phone: 8853 2308

Address: 9 South Tce, Minlaton SA 5575

Services:

Physiotherapy

Fees: Under 16 years free, concession rates apply

Referral: Doctor's referral required

SYP Physio

Phone: 88522043

Address: 3 William St, Yorketown SA 5576

Website: www.sypphysio.vpweb.com.au

Contact: Tarina Warren

Services:

At SYP Physio the client base includes private patients, Workcover clients, Veterans Affairs clients, and patients eligible for Medicare plans.

Referral: No referral is required for private patients and HICAPS is provided to simplify payment and claiming for those with private health insurance.

SEXUAL HEALTH SERVICES

SA Health—Clinic 265

Phone: 8222 5075 or 1800 806 490

Address: 1st Floor 275 North Tce, Adelaide SA 5000

Email: STD.Services@health.sa.gov.au

Website: <http://www.sahealth.sa.gov.au/wps/wcm/connect/public+content/sa+health+internet/health+services/sexual+health+services/clinic+275>

Services:

Offers a walk-in, free and confidential testing, diagnosis and treatment of sexually transmitted

infections

Service area: Statewide

Hours: Monday: 10.00 am to 4.30
Tuesday: 11.00 am to 6.30 pm
Wednesday: 11.00 am to 6.30 pm
Thursday: 10.00 am to 4.30 pm
Friday: 10.00 am to 4.30 pm

Referral process: walk-in. no appointment necessary

SA Health—Pregnancy Advisory Centre

Phone: 1800 672 966

Address: 21 Belmore Tce, Woodville Park SA 5011

Email: Pregnancy.Advisory@health.sa.gov.au

Website: <http://www.sahealth.sa.gov.au/wps/wcm/connect/public+content/sa+health+internet/health+services/womens+health+services/unplanned+pregnancy+services/pregnancy+advisory+centre>

Services:

Provides pro-choice, non-judgmental, women centred and understanding services for women with an unplanned pregnancy.

Service area: Statewide

Hours: 9am-4pm, Monday to Friday

Fees: Co-payment for some services. Medicare and/or health care card required

Referral: self-refer

SA Health—Yarrow Place Rape and Sexual Assault Service

Phone: 8226 8777 24 hour number
8226 8787 or

Toll Free in SA: 1800-817-421

Address: Level 2, 55 King William Rd, North Adelaide SA 5006

Email: info@yarrowplace.sa.gov.au

Website: <http://www.wch.sa.gov.au/services/az/other/yarrowplace/files/index.htm>

Services:

Providing direct services to people who have been raped or sexually assaulted and who were aged 16 years or more at the time of the assault, resourcing other agencies and workers to provide services to victims/survivors, working to prevent rape and sexual assault.

Service area: Statewide

ShineSA

Phone: 1800 188 171

Email: sexualhealthhotline@shinesa.org.au

Services:

Sexual health information & clinics
www.shinesa.org.au

Hours: Monday-Friday, 9am-1pm or

SPEECH PATHOLOGISTS

Integrated Support Services—DECD

Speech & Language Pathologist

Phone: 8821 2555

Address: 45 Taylor St, Kadina SA 5554

Website: www.decd.sa.gov.au

Services:

Speech & Language Pathologist

FOCUS: *Learners K-12 with communication difficulties and their families.*

FUNCTIONS:

- Identification of communication difficulties at individual level, verification
- Intervention at individual and group level, communication strategies, contribute to learning plans, case work management, case coordination & management
- Capacity building of staff & families through training, modelling, information, resources, strategies

Service area: DECD Schools on the Yorke Peninsula

Hours: Mon-Fri 9am-5pm

Referral: Via School only. Pre-referral with service provider and electronic referral by school through EDSAS or Early Years System.

Leonie Martin Speech Pathologist

Phone: 0427 858 725

Address: 57 David St, Kadina SA 5554

Email: leoniespeech@bigpond.com

Contact: Leonie Martin

Jody Koch Speech Pathologist

Phone: 0405 540 537

Address: Maitland SA 5573

Email: jodyspeech@bigpond.com

Contact: Jody Koch

CARERS SUPPORT

Carers Link Yorke Peninsula

Phone: 1300 783 785
Address: Shop 3/21 Frances Tce, Kadina SA 5554 (next door to Priceline) or 39 Warooka Rd, Yorketown SA 5576 (behind Uniting Church)
Email: carerslinkyp@carerslinkyp.org
Website: www.carerslinkyp.org
Contact: Carer Support Coordinator
Services:

The 'Carer Support Model' is Carer support that is locally based, Carer driven, and provides a 'one-stop-shop' for Carers. The model offers a flexible range of support to Carers assisting them to maintain their own health and wellbeing. It recognizes that all Carers are unique individuals capable of shaping their own destiny and that Carer support is available to 'walk alongside' to support them to find the information and strength they need to achieve this. Carer support is based on a sound philosophy and respects difference and the rights of individuals, offers a flexible program that is Carer driven, is a community development model and is flexible and non prescriptive.

Service area: Yorke Peninsula

Hours: Monday—Friday

Fees: Free registration consumer may be asked to contribute to some services

Referral: walk in self referral, phone, email or from Services

Uniting Communities

Phone: 88212 654 or free call 1800 052 222
Address: 24 Goyder St, Kadina SA 5554
Email: kadinaoffice@unitingcommunities.org
Website: www.unitingcommunities.org
Services:

Uniting Communities provides respite and information support to Carers living in the North West Country regions of SA.

The Young Carers program aims to support Young Carers at risk of leaving secondary education or the vocational education equivalent by helping them to better manage and balance their education while continuing their caring responsibilities.

Access: This service can be accessed by the following:

Young people up to and including 25 years of age.

High school students or Young Carers completing secondary education at a vocational institution.

Primary school students

All carers are assessed for eligibility and relative need.

Respite Support for Carers of Younger People with Severe and Profound Disabilities aims to increase the provision of immediate and short-term respite to carers of young people with severe or profound disabilities whose needs are not being met through existing programs or local community services.

Access: A primary carer caring for a child with a severe or profound disability under 30 years of age/ a care recipient under 65 years of age where the carer stress is assessed as significant.

Service area: North West Country regions of SA

Hours: According to assessed need.

COUNSELLING

Centacare Catholic Family Services Country SA

Phone: 0429 835 246
Address: 17 Goyder St, Kadina SA 5554
Email: pwood@centacarecdpp.org.au
Website: www.centacarecdpp.org.au
Contact: Pam Wood - Counsellor/Social Worker
Services:

Centacare offers counselling and support for individuals, couples and families on issues that could be causing stress or concern, e.g. grief, anger management, relationship issues, parenting concerns, anxiety and depression, stress management.

Service area: Primarily the Copper Coast area: Kadina, Moonta and Wallaroo . Yorke Peninsula residents if able to travel to Kadina.

Hours: By appointment

Fees: \$20 per session, if able.

Referral: Simply call 0429 835 246

FAMILIES SA

Phone: 8828 0400 or Toll Free 1800 804 550
 Child Abuse Report Line 13 14 78
Address: 10 Digby Street, Kadina SA 5554
Website: www.families.sa.gov.au
Services:

Families SA is part of the Department for Education and Child Development. Our primary area of concern is the protection of children – "keeping them safe". Our vision is for a future where children, young people and families are safe, supported and connected to the future. Our work includes:

- Protecting children from abuse and harm
- Supporting families to reduce risk to children
- Providing alternative care for children and young people when home is no longer an option
- Working with young people who break the law
- A commitment to reconciliation and providing culturally appropriate services.

Service area: Mid North, Copper Coast and Yorke

Peninsula

Hours: Open to the public: Mon, Wed, Fri 8:45am to 5pm

Referral: To make a notification of suspected child abuse or neglect, please contact Child Abuse Report Line 13 14 78

GENERAL MENTAL HEALTH SERVICES

Child and Adolescent Mental Health Services (CAMHS)

Phone: 1800 819 089 (free call number)

Services:

What do we do? CAMHS provides confidential therapy services for children, young people (up to the age of 16 years) and their families who are having difficulties in emotional, behavioural and/or social areas of their lives. Services include family and individual therapy, group programs for children, groups for parents and information workshops for parents and carers.

What sort of problems can CAMHS help with? *Emotional issues* – anxiety, fears or worries, feelings of sadness and depression, low self-worth, self-harming, suicidal thinking, mood changes, attachment, school refusal and/or abuse. *Behavioural issues* – aggression, destructiveness, disruptiveness and/or distractibility. *Social issues* – social withdrawal, family conflict, and social isolation and/or friendship problems. *Mental illness* – confused or delusional thinking and/or hallucinations.

When should a referral be made? When the young person and/or the family have talked with close friends or relatives, or to the school counsellor, or to the local doctor and the situation doesn't seem to be improving.

Service area: Statewide

Referral: Anyone can ring to talk to a CAMHS duty worker about a referral to the service. This is a voluntary service; a referral from another agency will need to be discussed with the young person and/or family prior to a service from CAMHS being provided. Consent from the legal guardian is required before a CAMHS appointment can be offered to a young person under the age of 16 years.

Country Health SA - Yorke Peninsula Community Mental Health Team/ Youth Mental Health Service

Phone: 8828 1350 (Kadina) or 8853 3500 (Minlaton) after hours and emergency assistance 131 465

Address: 2 Mine St, (PO Box 247) Kadina SA SA 5554 & 9 South Tce, Minlaton SA

5575

Website: www.countryhealthsa.sa.gov.au

Contact: Team Leader

Services:

The Yorke Peninsula Mental Health Team provides triage, assessment, care coordination and support for people aged 16 and above with a mental illness. The service is primarily provided in the community or through in-reach support for the local hospitals. The team is able to provide a service for youth and older people in addition to adults. The team coordinates clinics for the visiting psychiatrists to Kadina and Minlaton, as well as using the digital tele-network for access to urgent psychiatry through video-conferencing. After hours support is available through the Emergency Triage and Liaison service and is available to any community member or health professional by calling 13 14 65.

Service area: Yorke Peninsula, including Alford & Bute

Hours: 8.30am - 5.00pm Monday – Friday

Fees: No cost

Referral: Self-referral through the Country Referral Unit by calling 1800 003 307 or via your health professional, hospital or GP

UnitingCare Wesley Country SA— Personal Helpers and Mentors:

Phone: 8821 0300, 0438 778 218 or 0488 938 748

Address: UCWCSA 8 Digby St, Kadina SA 5554

Email: Bronwyn.hurrell@ucwcsa.org.au

Website: www.ucwcsa.org.au

Contact: Bronwyn Hurrell

Services:

We assist people with a mental illness to recovery and to a more fulfilling life. For anyone at the end of their recovery journey and want to work we can assist the Employment Services Providers to increase your chance of employment.

Service area: Port Pirie and some surrounding districts, Copper Coast and Yorke Peninsula

Hours: Mon—Fri 9am – 5pm

Access: We help people with a mental illness eg: depression, anxiety, schizophrenia, bipolar, etc Ages 16 and up.

Fees: This service is free.

Referral: This program is voluntary and anyone can refer, including the person themselves.

PSYCHOLOGISTS

Integrated Support Services—DECD Psychologist

Phone: 8821 2555

Address: 45 Taylor St, Kadina SA 5554

Website: www.decd.sa.gov.au

Services:

Psychologist

FOCUS: *Learners K-12 with developmental, cognitive, social, emotional, behavioural, physical difficulties & exceptional needs including giftedness & their families.*

FUNCTIONS:

- Identification of developmental, cognitive, social, emotional, behavioural & physical functioning at individual/site/community level
- Individual, group, whole site, community learning and behaviour strategies/interventions, advice, reports and recommendations, case work management, case management/coordination
- Capacity building through provision of training, modelling, information, resources, strategies

Service area: DECD Schools on the Yorke Peninsula

Hours: Mon-Fri 9am-5pm

Referral: Via School only. Pre-referral with service provider and electronic referral by school through EDSAS or Early Years System.

Sally Emery Psychologist

Phone: 0429 020 938

Address: PO Box 73, Curramulka SA 5580

Consult

Addresses: Consult at Minlaton Community Health, 9 South Tce, Minlaton
Ardrossan Medical Centre, 10 Second Ave, Ardrossan
Maitland Medical Centre, 69 Robert St., Maitland

Email: sallyemery2@gmail.com

Contact: Sally Emery

Services: Adult Mental Health and Well Being

Service area: Central and Southern Yorke Peninsula (Maitland, Ardrossan, Minlaton)

Hours: Tuesday, Wednesday, Thursday 9-3.

Fees: Bulk Bill when referred by GP with Mental Health Treatment Plan. \$140 per hour private.

Referral: Self-referral or GP. Also via third party organisations i.e. Return to Work Scheme, VVCS, VOC etc.

Shrinkwrap Psychology

Phone: 0428 399 169

Address: Kadina

Contact: Bethany Patterson

Stop Think Do—Child, Clinical & Integrated Support Services—DECD Family Psychologist

Phone: (08) 8267 1001 (for all appointments)

Address: 266 Melbourne St, North Adelaide SA 5006 and Ardrossan Health Centre,

Fifth St, Ardrossan SA 5571

Email: lindy.petersen@stopthinkdo.com

Website: www.stopthinkdo.com

Contact: Jan Cleland, secretary

Services:

Full clinical psychology services including assessments and treatment for children, adolescents, parents, adults, and also school liaison. Referrals accepted for learning and concentration difficulties, developmental delay, autism, difficulties with behaviour, anxiety or moods, parenting and marital problems. Group social skills training for children and adolescents using Stop Think Do.

Service area: 266 Melbourne Street, North Adelaide and Ardrossan Health Centre, Fifth Street, Ardrossan

Hours: Monday to Thursday in North Adelaide, monthly in Ardrossan

Fees: Telephone secretary for discussion of fees. Medicare rebates apply with a GP Mental Health Plan, and private health rebates.

Referral: Telephone secretary for appointment. No referral needed unless under a Mental Health Plan.

SOCIAL WORKERS

Country Health SA—Social Worker

Phone: Minlaton 8853 2308 (Southern Yorke Peninsula)

Walleroo 8823 0270 (Northern & Central Yorke Peninsula)

Address: 9 South Tce, Minlaton SA 5575
Ernest Tce, Wallaroo SA 5556

Services:

Counselling and support to deal with complex issues affecting wellbeing such as changes to circumstances, family and relationship issues, conflict, and stress

Service area: Yorke Peninsula

Referral: Country Referral Unit 1800 003 307

Country Health SA—Youth Social Worker

Phone: 8853 3509

Address: 9 South Tce, Minlaton SA 5575

Email: tanya.short@health.sa.gov.au

Services:

Health promotion, preventative programs, social work services, and service and health information for young people 12-25 and their families.

Service area: Yorke Peninsula Council area

Referral: Country Referral Unit 1800 003 307

Integrated Support Services—DECD Social Worker

Phone: 8821 2555

Address: 45 Taylor St, Kadina SA 5554

Website: www.decd.sa.gov.au

Services:

Social Worker (Attendance & Engagement)

FOCUS: Learners K-12 with attendance, engagement & retention issues & their families.

FUNCTIONS:

- Identification of needs & data analysis
- Provision of advice at individual, group, site & community levels
- Case work management & case management/coordination
- More proactive approaches & whole site & community responses to attendance & engagement concerns

Social Worker (Family Focus)

FOCUS: Learners K-12, families and communities, sites requiring support for social, emotional wellbeing, mental health and critical incident response.

FUNCTIONS:

- Assistance at whole site, partnership and community level to identify needs and plan proactive interventions regarding social and emotional wellbeing and mental health

Service area: DECD Schools on the Yorke Peninsula

Hours: Mon-Fri 9am-5pm

Referral: Via School only. Pre-referral with service provider and electronic referral by school through EDSAS or Early Years System.

ABORIGINAL SPECIFIC SUPPORT

Aboriginal Affairs and Reconciliation

Phone: 8226 8900
Address: Level 7, 11 Waymouth St, Adelaide SA 5000

Email: grant.hickman@sa.gov.au

Services:

Provide policy advice on Aboriginal issues to the state government and its agencies. Administers the Aboriginal Heritage ACT, Essential Services Program, training policies and maintenance and funding for Aboriginal communities to develop business enterprises. Supports Aboriginal people to access government services. Aims to support consistent, fair and equitable resource allocation as well as the delivery of timely and cost effective services.

Council of Aboriginal Elders of SA (CAESA)

Phone: 8367 0783
Address: 50-60 Sussex St, North Adelaide SA 5006
Email: jhaynes@caesa.org
Contact: Janine Haynes

COUNTRY WOMEN'S ASSOCIATION (CWA)

Visit www.cwaa.org.au to find your local branch.

MISCELLANEOUS GROUPS

Stansbury Community Craft & Friendship

Phone: 0439 524 321
Contact: Marion
Address: Stansbury Community Church, Weaver St, Stansbury SA 5582
Hours: Wednesdays 9.30 – 11.30am

PROGRESS ASSOCIATIONS

As provided by the Yorke Peninsula Council

- **Ardrossan Progress Association**
 Margie Gaisford 8837 4195
 PO Box 44, Ardrossan SA 5571
ardprogress@netyp.com.au
- **Arthurton Progress Association**
 Tessa Colliver 0419 824 112
 PO Box 123, Arthurton SA 5572
aandallen@bigpond.com.au
- **Balgowan Progress Association**
 Lloyd Geater-Johnson 0419 033 937
 PO Box 54, Maitland SA 5573
lloydgeater@bigpond.com
- **Black Point Progress Association**
 63 Barker Rd, Prospect SA 5082
- vhw@bigpond.com
Bluff Beach Community Group
 Carleen Cook 0419 532 288
 PO Box 31, Minlaton SA 5575
cook2davit@bigpond.com
- **Chinaman Well Shacks Owners Association**
 Sue Haigh 8338 0963
 5 Myola Ave, Glenunga SA 5064
sushaigh@bigpond.net.au
- **Coobowie Progress Association**
 Glennis Couprie 8852 8339
 C/O Post Office Coobowie SA 5583
glenniscouprie@bigpond.com
- **Corny Point Progress Association**
 Heather Drury 0428 553 302
 PO Box 27, Corny Point SA 5575
contact@cornypoint.com.au
- **Curramulka Community Club**
 Catherine Watters 0427 542 157
 PO Box 120, Curramulka SA 5580
laighside@gmail.com
- **Edithburgh Progress Association**
 Diana Sweeney 0422 120 042
 PO Box 62, Edithburgh SA 5583
edithburgh.progress@internode.on.net
- **Foul Bay Area Progress Association**
 Bronte Crisp 0429 170 241
 8 Skylark Cl, Flagstaff Hill SA 5059
bcrisp@picknowl.com.au
- **Friends of Port Moorowie**
 Jo Daniels-Wilson 8852 1027
 PO Box 189, Yorketown SA 5576
thefopm@gmail.com
- **Friends of Wauralte & District**
 Rachel Robertson 0410 449 462
 Twelftrees RSD, Minlaton SA 5575
rachjrob85@gmail.com
- **Hardwicke Bay & District Progress Association**
 Judi Machadinho 8853 4131
 PO Box 33, Hardwicke Bay SA 5575
progress@hardwickebay.org
- **James Well & Rogues Point Progress Association**
 Janet Maguire 0400 139 993
 PO Box 31, James Well SA 5571
secretary@jameswellroguespoint.org.au
- **Maitland & District Progress Association**
 Roger Morgan 0419 822 130
- **Marion Bay Township**
 Ken Vickery 0409 942 485
 C/- Marion Bay General Store, Marion Bay SA 5575
kenvickery@bigpond.com
- **Minlaton & District Progress Association**
 Charlotte Germaine 0458 179 309
 PO Box 2007, Minlaton SA 5575
c.germaine@internode.on.net

RELATIONSHIPS

- **Pine Point Progress Association**
Wayne Lynch 0408 893 828
PO Box 20, Pine Point SA 5571
pinepointpa@gmail.com
- **Point Turton Progress Association**
Neale Forbes
PO Box 56, Point Turton SA 5575
neale@forbeswp.com.au
- **Port Clinton Progress Association**
Kathy Behrendt 0428 377 287
C/- Post Office Port Clinton SA 5570
portclintonprogress@gmail.com
- **Port Julia Progress Association**
Dee Langoulant 0458 475 676
RSD 20 Port Julia via Minlaton SA 5575
secretary@portjuliapa.org.au
- **Port Rickaby Progress Association**
Gail Burke
PO Box 259, Minlaton SA 5575
norherrisk@internode.on.net
- **Port Victoria Progress Association**
8834 2234
Box 182 Port Victoria 5573
- **Port Vincent Progress Association**
Beth Fairlie 8853 7172
PO Box 92, Port Vincent SA 5581
bfairlie@internode.on.net
- **Price Progress Association**
Diana Williams 0408 858 784
PO Box 82, Price SA 5570
dragon2@activ8.net.au
- **Sheoak Flat Progress Association**
Jenny Highett 8280 9325
PO Box 1061, Port Vincent SA 5581
helendermody4@hotmail.com
- **Stansbury Progress Association**
Janette Butler 8852 4577
PO Box 13, Stansbury SA 5582
progress@stansburysa.com
- **The Pines Progress Association**
Wayne Wilson 8855 3342
PO Box 8, Warooka SA 5577
thepines5577@internode.on.net
- **Tiddy Widdy Progress Association**
Mike Smith 0409 696 617
55 Hosking Rd, Toddy Widdy Beach SA 5571
tiddywiddy.progress@bigpond.com
- **Warooka Progress Association**
Joan Bannon 0438 545 102
PO Box 212, Warooka SA 5577
flahertyscorner@bigpond.com
- **Wool Bay Progress Association**
Di Sampson 0407 528 226
PO Box 57 Wool Bay SA 5575
pickeringcottage@internode.on.net

- **Yorke Progress Association**
Lesley-Anne Swaans 0413 028 616
PO Box 208 Yorketown SA 5576
lesley-anne.swaans@yorke.sa.gov.au

SERVICE CLUBS/GROUPS

Local APEX, Lions, Rotary details will be added to the online version.

TIDY TOWNS GROUPS

Additional Tidy Town contact details will be added to the online version.

Ardrossan Tidy Towns

Phone: 88373169
Contact: Lawrence Greig
Hours: Volunteers meet at the Old CFS Shed at 9 AM on Tuesday mornings for workings on various projects around the town.
Services:
New members are most welcome. No particular skills are required, other than a sense of humour!

Maitland Tidy Towns

Phone: 8832 2464
Contact: Mark Hector
Hours: 1st Sat of each month

Stansbury Tidy Towns

Phone: 88524469
Contact: Don
Hours: Tuesday mornings
Services:
Volunteer group promoting general beautification of the Stansbury township

YOUTH GROUPS

Ardrossan Kids' Club

Phone: Kallie 0409 284 380 or
Cathy 0419 495 194
Address: Ardrossan Uniting Church Hall
Website: Find us on Facebook by searching:
Ardrossan Kids' Club
Contact: Kallie Eglinton or Cathy Redding
Services:
The primary goal of the Ardrossan Kids' Club is to share the good news of Jesus Christ in a warm, loving, caring environment. Ardrossan Kids' Club is open to Primary School aged children. Children participate in games, stories and crafts. Ardrossan Kids' Club is held on selected Fridays in the school term.

Combined Churches Youth

Address: 36 Main St, Minlaton SA 5575

Website: www.ccy.net.au

Services:

CCY is a youth group supported by the churches of Southern Yorke Peninsula. It aims to provide a safe, positive environment for young people to meet, have fun and learn about the Christian faith. CCY is for youth aged from Year 7 and usually meets fortnightly on Saturday nights 7PM– 10PM during school terms. Events are held at various churches and locations around Southern Yorke Peninsula with occasional ventures elsewhere. CCY is also a point of contact for obtaining details and information about other local church youth groups and their events.

Service area: Yorke Peninsula

Hours: Fortnightly on Saturday nights 7-10pm during school terms.

Edithburgh Youth

Phone: Ben 0402 782 735 or

Gabi 0429 493 939

Address: Yorketown Rd, Edithburgh SA 5583

Website: www.edithburghcc.com.au/index.php/our-church/youth

Contact: Ben Braund or Gabi Schmidt

Services:

We aim to help meet the social and spiritual needs of teenagers and young adults within a safe, no pressure environment. Our program emphasises fun and friendship and encourages a healthy personal relationship with God through Jesus Christ.

Hours: Edithburgh youth generally meets on Saturday nights at 7.00pm. Occasionally however, we meet at other times and venues.

Stansbury Community Church Youth Group

Phone: Matthew and Krystal 88392021 or 0408664962

ASSISTANCE TO FIND EMPLOYMENT

Career Services Yorke & Mid North

Phone: 1300 068 531
Address: 85 Ellen St, Port Pirie SA5540
Email: cs@yorkeandmidnorth.com.au
Website: www.yorkeandmidnorth.com.au
Contact: John Carbone, Career Services Practitioner

Services:

Career Services is a FREE service for individuals in the Yorke Region, the Mid North Region and the Southern Flinders Ranges. We aim to assist clients with career profiling, career planning and help prepare those people for employment that may currently be slipping through the gaps and not eligible to be serviced by a Job Network or other service.

We provide FREE assistance to eligible clients by way of providing the tools to plan their preferred working future i.e. assist in creating resumes, cover letters, referral to training and support to get the skills required to gain employment.

These services would appeal to people who:

- are unemployed or underemployed,
- do not qualify or are not registered for Centrelink, or who are 'volunteers' in the system,
- are parents returning to work,
- are Young People & Families transitioning into the workforce,
- are workers under threat of redundancy

Service area: Yorke Peninsula, Copper Coast, Southern Flinders, Port Pirie

Hours: 9.00am-5.00 pm

Fees: Free service to anyone not working full time hours, Fees will apply to fully employed people.

Referral: Referral Form Available or Phone 1300 068 531 to make a booking.

Interwork Part of Wise Employment

Phone: 8821 1483
Address: 17 Graves St, Kadina SA 5554
Email: barrys@interwork.com.au
Website: www.interwork.com.au
Contact: Barry Sims - ESA Manager

Services:

Interwork was established in 1991 and merged with Wise Employment in 2014. We are a Disability Employment Service providing employment related support to people through the delivery of employment and employment-related services, Interwork will initiate pathways to independence through collaboration with stakeholders and leadership within communities. Interwork is an

experienced and well established employment service specialist with offices across South Australia, Victoria, New South Wales, Tasmania and the Northern Territory. We partner with employers and community organisations to create employment opportunities for people with a diverse range of abilities. Every year we help thousands of people with a disability or disadvantage to find and maintain meaningful employment.

Service area: Yorke Peninsula, Copper Coast, Clare and Mid North

Hours: Monday—Friday 8am-5pm

Fees: Nil

Referral: Eligible school leavers, self referral (if eligible) or via DHS Centrelink

MADEC Employment and Training

Phone: 8821 6000
Address: 13 Taylor St, Kadina SA 5554
Website: www.madec.edu.au

Services:

Madec is a not for profit community based organisation. job active provider for people requiring income support from Centrelink and registered Training Organisation providing accredited training in a range of qualifications.

Service area: Yorke Peninsula, Mid North, North West Country

Hours: 8.30am-5.00pm

Fees: no fees for job active services, course fees dependant on pathway chosen

Referral: can direct refer depending on persons particulars and situation or can be referred by Centrelink.

Personnel Placement Consultancies Pty Ltd

Phone: 1800 768 544
Address: Unit 2, 10 Taylor St, Kadina SA 5554
Email: lyn.stranger@ppcons.com.au
Website: www.ppcons.com.au
Contact: Lyn Stranger

Services:

Personnel Placement Consultancies Pty Ltd (PPC) has been providing solutions for people with injury, illness or disability in the workplace, and their employers, since 1997. We have grown from a group of 3 to a team of 30, based at 5 permanent sites plus outreaches in metropolitan Adelaide and regional SA, and in the ACT. Our core business is Workplace Rehabilitation and specialist Disability Employment Services. We offer case management, job placement, specialist assessment and consultancy services. Our expertise is varied and responsive, and our service is adaptable to meet a range of needs. Our clients and referring customers value our diversity and significant capability.

Re-engage Youth Services

Phone: 8326 6540
Address: 61 Beach Rd, Christies Beach SA 5165
Email: admin@re-engage.com.au
Website: www.re-engage.com.au

Services:
 Re-Engage Youth Services provides a range of services including program delivery and design, assertive outreach case management, professional development, federally approved student welfare workers and course brokerage. See www.re-engage.com.au/services for specific programs run by Re-engage Youth Services.

Service area: Various public schools across the Yorke Peninsula

Hours: Office hours - 9am-5pm Monday to Friday

Fees: School funded

Referral: School referral necessary

Sureway

Phone: 8885 5900
Address: Unit 2/10 Taylor St, Kadina SA 5554
Website: www.sureway.com.au

Services:
 To actively support our Job Seekers to participate in the community by addressing social barriers, developing workplace skills and assisting them to secure and maintain sustainable employment

Service area: Yorke Peninsula and Mid North

UnitingCare Wesley Country SA—Disability Employment Service

Phone: 8821 0300 or 0427 318 793
Address: UCWCSA 8 Digby St, Kadina SA 5554
Website: www.ucwcsa.org.au
Contact: Megan Haynes

We assist people with a disability to find suitable employment and/or training, and as a result positively change their lives. Other assistances include goal setting, job search, resume preparation, increasing employability skills and organising work experience.

We can help people with disability, people suffering from mental illness, unemployed & early school leavers who are all receiving an income support payment.

Hours: 9am to 5pm Mon—Fri

Fees: Free

Referral: Self referral or via Centrelink

Yorke Youth Services

Phone: 8821 4155
Address: 1/3 Forster St, Kadina SA 5554
Email: info@yorkeyouth.com.au
Website: www.facebook.com/yys.yorke
Contact: Beth Cock—Business Manager

Services:

Yorke Youth Services (YYS) provides individual case management to at risk students enrolled under the Flexible Learning Options (FLO) program. YYS also offers programs to support the reengagement of these students back into mainstream study.

Service area: Yorke Peninsula

Hours: 8.30am-4.30pm Mon-Fri

Fees: On application

Referral: Generally via Schools FLO coordinator, but students or families may self-refer also available under certain conditions

CENTRELINK

Phone: www.humanservices.gov.au/customer/contact-us/phone-us

Address: Service Centre: 22 Taylor St, Kadina SA 5554

Agent: 27 Main St Minlaton SA 5575

Agent: 3 Robert St Maitland SA 5573

Agent: Rural Transaction Centre 65 Parrys Tce Point Pearce SA 5573

Agent: SYP Telecentre
 33 Stansbury Rd. Yorketown SA 5576

Website: www.humanservices.gov.au/customer/dhs/centrelink

Services:

Delivering a range of payments and services for people at times of major change.

COMMUNITY CENTRES

Maitland Information Centre

Phone: 8832 2174
Address: 3 Robert Street, Maitland SA 5573
Email: maitlandsa@internode.on.net
Website: www.maitlandsa.com

Service area: Maitland and surrounds

Hours: Mon—Fri 10am – 4pm

Services:

The Maitland Information Centre (MIC) is Maitland's Community and Tourism Information Centre along with being a Centrelink/Department of Veteran Affairs Agency. We offer a wide variety of services from Administration to Facility & Equipment Hire and Catering. We offer Internet access at competitive rates. The Centre has several computers all connected to the internet, this is an ideal setup for running small training seminars or just for public usage. The MIC offers a full range of secretarial services such as typing, printing, faxing, scanning, photocopying etc. As well as these services, we are happy to type up letters or other documents for you, help you work on your resume right through to designing party invitations, brochures or flyers. No job is too great or too small, so please ask our friendly team for a quote. We offer fantastic courses from computing to gardening.

SYP Telecentre

Phone: 88521820
Address: 33 Stansbury Rd, Yorketown SA 5576
Website: www.sypctc.com.au

Services:
 The SYP Telecentre provides community access to the internet and online learning, acts as a youth and community centre, business resource centre, training facility and centre for IT in the SYP region. It offers a comprehensive range of services from faxing and photocopying, colour copying and photo inkjet printing, scanning and photo retouching to document binding and folding. We also loan out a range of equipment from projectors to computers all at minimal cost.

As a regional Agency for Centrelink and Service SA we offer a number of convenient services that help the community in many ways. The centre can undertake both Driver Theory Tests and Boat Licence Theory tests as well as being able to register motor vehicles, boats and trailers. We have numerous Government forms and information available as well as being able to verify and fax Centrelink documents to wherever they are required to be sent.

COUNCIL

Yorke Peninsula Council

Phone: 8832 0000
Address: *Maitland—Principal Office*
 8 Elizabeth St, Maitland SA 5573
Minlaton—Branch Office
 18 Main St, Minlaton SA 5575
Warooka—Branch Office
 Player St, Warooka SA 5577
Yorketown—Branch Office
 15 Edithburgh St, Yorketown SA 5576
Email: admin@yorke.sa.gov.au
Website: www.yorke.sa.gov.au
Service area: Yorke Peninsula
Hours: 8.30-5pm Mon—Fri

FINANCE SUPPORT

Anglicare SA

Phone: 8832 2174
Address: Maitland Information Centre, 3 Robert St, Maitland SA 5573
Contact: Emergency Relief Coordinator
Services:
 Emergency relief
Service area: Maitland & Point Pearce
Hours: Tuesday 10am-12noon
Referral: Self-refer on 8832 2174

UnitingCare Wesley Country SA—Commonwealth Financial Counselling

Phone: 8821 0300 or 0488 119 738
Address: UCWCSA 8 Digby St, Kadina SA 5554
Email: ian.burgess@ucwcsa.org.au
Website: www.ucwcsa.org.au
Contact: Ian Burgess

Services:
 To provide financial counselling, budget advice and advocacy to those impacted by a financial crisis in their lives.

Service area: Mid North and Yorke Peninsula

Hours: 9am – 5pm Mon—Fri

Access: We can assist any person facing financial hardship in the geographical region we cover.

Fees: The service is free.

Referral: Self

UnitingCare Wesley Country SA—Gambling Counselling

Phone: 8821 0300 or 0488 119 738
Address: UCWCSA 8 Digby St, Kadina SA 5554
Email: ian.burgess@ucwcsa.org.au
Website: www.ucwcsa.org.au
Contact: Ian Burgess

Services:
 Uniting Care Wesley Country SA's Gambling Help Service can help you take back control over your life. We provide free, confidential therapeutic and financial counselling services to those who are struggling with the consequences of problem gambling.

Service area: Mid North and Yorke Peninsula

Hours: 9am – 5pm Mon—Fri

Access: We assist any person struggling with the consequences of problem gambling.

Fees: This service is free.

Referral: Self

UnitingCare Wesley Country SA—Microcredit Loans

Phone: 8821 0300
Address: UCWCSA 8 Digby St, Kadina SA 554
Website: www.ucwcsa.org.au
Contact: UCWCSA Reception

Services:
 We offer a range of no interest loans to assist people facing financial difficulties to pay for services or obtain new items.

Service area: Yorke Peninsula

Hours: Appointments are currently held on Tuesdays between 10am and 3pm.

Access: Families or individuals on a low income. Eligibility criteria apply including the ability to repay the loan without impacting the budget. Financial

details including a Centrelink income statement are required.

Fees: This service is free.

Referral: Self

FOOD & CLOTHING

Meals on Wheels

Volunteers deliver nutritious meals and social interaction to older people who are often housebound

Deliveries Monday – Friday. Volunteers on a roster system

St Vincent DePaul Society

Phone: 8832 2111

Address: 21 Robert St, Maitland SA 5573

Services:

Emergency relief services such as food, clothing furniture etc.

Referral: All enquiries ring number above.

HOUSING SUPPORT

HomeCare+

Phone: 8821 1279 or 0420924883

Address: PO Box 249, Kadina SA 5554

Email: annd@homecareplus.asn.au

Website: www.homecareplus.asn.au

Contact: Ann Davies, Regional Team Leader

Services:

Support for all ages to live independently in their own, chosen home.

Service area: Yorke Peninsula, Copper Coast, Clare regions (we have support workers in Maitland, Yorketown area whom provide support to clients in Edithburgh and Stansbury) Also I have workers in Balaklava whom provide support to clients in Hamley Bridge as well as Burra, and Clare.

Hours: 9am-5pm weekdays with 24/7 phone support

Fees: Quote provided or funded by DCSI, UC, etc

Referral: self refer or via DSA

Housing SA

Phone: 131 299

Services:

Housing SA, a division of the Department for Communities and Social Inclusion, administers services on behalf of the South Australian Housing Trust. It works closely with other departments, agencies and non-Government organisations to provide South Australians with affordable housing options and support.

Hours: Phone lines are open from 8.30 am to 5.30 pm Monday to Friday

UnitingCare Wesley Country SA—Yorke and Mid North Generic Homelessness Service

Phone: 8821 0300 or 0428 326 527 (duty worker)

Address: UCWCSA 8 Digby St, Kadina SA 5554

Website: www.ucwcsa.org.au

Contact: Michelle Cameron and Donna Barnes

Services:

This service provide support and options for homeless people and those at risk of homelessness.

Service area: Mid North (Port Pirie), Lower North (Clare) and Yorke Peninsula (Kadina).

Hours: 9am to 5pm Mon—Fri. For emergencies outside of these hours contact Gateway Homelessness on 1800 003 308.

Access: We can assist families, single adults and couples who are homeless or at risk of homelessness.

Fees: This service is free.

Referral: Self, family, friends, UCWCSA programs and other service providers.

MISCELLANEOUS

Youth Affairs Council of South Australia Inc (YACSA)

Phone: 8211 7546

Address: Level 4, 182 Victoria Square
Tarntanyangga, Adelaide SA 5000

Email: yacsa@yacsa.com.au

Website: www.yacsa.com.au

Contact: Anne Bainbridge—Executive Director

Services:

The Youth Affairs Council of South Australia Inc (YACSA) is the peak body in South Australia that represents the interests of young people aged 12-25 years and organisations and networks throughout the non-government youth sector. YACSA represents a state perspective at the national level and our policy positions are independent and not aligned with any political party or movement. YACSA's aim is to encourage young people, and those working with them and for them, to achieve meaningful improvements in the quality of young people's lives.

Service area: Statewide

Hours: 9am- 5pm

Fees: Membership is free for young people aged 12-25 years.

Referral: Membership forms can be found on our website www.yacsa.com.au

TRANSPORT

YP Community Transport

Phone: 8853-3700
Address: PO BOX 395, Minlaton SA 5577
Website: www.ypcommunitytransport.org.au
Contact: Julie Mason—Manager
Services:

Community transport that includes a community bus services that takes people from SYP into the Copper Coast three times per week, also travelling around SYP on Thursdays. Medical bus five days per week, clients must have medical appointments between 11am and completed by 2.30pm to return on the same day. Cost \$14 drop to appointment.

Service area: Barunga West, Copper Coast and Yorke Peninsula Council areas with volunteer service that supports frail aged.

Hours: Office hours 9-5 Mon-Fri

Fees: No assessment costs/ fees are set

Referral: ring direct

YP Coaches

Phone: 8821 2755
Address: Truscott House, Cnr Hallet St & Taylor St, Kadina SA 5554
Email: enquiries@ypcoaches.com.au
Website: www.ypcaches.com.au
Services:

Yorke Peninsula Coaches is a provider of express and charter coach services throughout the Yorke Peninsula and Mid North regions of South Australia.

ACTIVITIES FOR YOUNG CHILDREN & FAMILIES

Early Childhood Initiative Group

Email: tracey.thom282@schools.sa.edu.au

Services:

Activities for birth to 5 year olds from Minlaton and below on the Yorke Peninsula updated each term by the Early Childhood Initiative Group. Details below were accurate as of 5.3.15. Please email Janet for the most up to date details.

- **Corny Point Play Centre**
Mondays 9.30am-11.30am
CP Memorial Hall \$1/family
Call Ali Hankinson Ph:0439 894 499
- **Marion Bay Play Centre**
Mondays 9am—12noon
MB Hall \$1/family
Call Carmen Webb Ph:0407714681
- **Edithburgh Play Centre**
Mondays 9am-12noon
Edithburgh Primary School \$1/family
Call Rosy Dick Ph:88526117
- **Minlaton Playgroup**
Mondays 10am- 12noon
Minlaton District Early Learning Centre
\$1/family
Call 88532301
- **Music & Movement**
Mondays 3:15pm
Minlaton District School
2-4yrs \$7 per session
Contact Kelly Cook Ph: 0431335057
- **Stansbury Play Centre**
Mondays 9am-12noon
Stansbury Primary School \$1/family
Call Karen Shearer Ph:88524286
- **Yorke town Playgroup**
Mondays 9am-12noon
Yorke town Children's Centre \$1/Family
Call Michelle Thompson Ph: 8852 1605
- **Port Vincent Playgroup**
Mondays 9am— 10:45am
Port Vincent Primary School (no cost)
Call Erin Rose Ph:8853 7027
- **Ready Set Go**
Tuesdays 10am-11.30am
St Columba's School—Yorke town
For more information call 88521461

- **CAFHS Coffee Mornings**
1st Tuesday of the month 10am-12noon
Yorke town CYH Rooms
Free
Call Rowena
Ph:0408824025
- **Little Athletics Tiny Tots (3-5yrs)** Tuesdays
4pm- 4.45pm (Term 1 & 4)
Minlaton School Oval
Call Jodie Stanley for cost and info:
0439038904 or syplittleaths@gmail.com
- **Curramulka Playgroup**
Tuesdays 9:30am—10:45am
Curramulka Primary School
Janette Clarke or Rosie Harden
Ph:8854 2102
- **CAFHS Coffee Mornings**
Warooka Consulting Rooms
First Wednesday of the month 10am-12noon
Free
Call Jo Rowe
Ph: 0429 027 447
- **Baby Bounce & Rhyme**
Thursdays 10am-10.30am
Yorke town Library
Free
For more info call 88521647
- **Mothers of Preschoolers (MOPS)**
Edithburgh Community Church Centre.
10am - 12noon
Thursdays during school term on even weeks
Call Beth Badman 0428 810 315 or
Tracy-Lee Maslin 0407 088 740
- **Active Kids**
Fridays 9am-10.30am
Yorke town Area School
\$5/Child
Call Brenton Burt
Ph: 0439349040
- **Baby Bounce and Rhyme**
Fridays 10am-10.30am
Minlaton Library
Free
1st and 3rd Friday of the month
during term time
For more info call 88532339
- **Minlaton Uniting Church Kids (MUNCH Kids)**
Sundays fortnightly 9:15—9.50am
Contact Sarah McIntosh 0407 131 907
No cost

- **Edithburgh Community Church**
Crèche, Tiny Tots group (2-4yrs) & Kids Church Program (4-12yrs)

Central Yorke Peninsula birth-5 year old activities

Services:

Activities for birth to 5 year olds around central Yorke Peninsula (Maitland and Ardrossan)

- **The Friends of the CYP Library**
President - Karen Crawford 0439 031 139
P.M.B. 5, Maitland SA. 5573
devdowns@gmail.com
\$5 membership a year
- **Maitland Area School Parents & Friends**
President - Brooke Polkinghome
Secretary : Fiona Hollams 0418 211 445
Address: RMD Sandilands, via Ardrossan SA 5571
ionahollams@gmail.com
- **Maitland Playgroup**
Kate Butler 8832 2266
Maitland Children's Centre 15 Kilkerran Tce, Maitland SA 5573
dl.6612.leaders@schools.sa.edu.au
Find us on Facebook by searching: "Maitland Playgroup"
Fridays 9:30am – 11:00am during school terms. Please bring a piece of fruit to share. \$2 per child weekly & Playgroup SA Association membership
- **CYP Gymjams**
Renee Oster 0412 589 662
Ardrossan Area School Gym
Tuesdays 9:30am – 10:30am
Find us on Facebook by searching: "CYP Gymjams"
\$6.00 single \$10.00 family per visit plus Playgroup SA Association Membership
- **Maitland Lutheran School Ready –Set-Go!**
8832 2288
23 Clinton Rd, Maitland SA 5573
admin@mlschool.com.au
Occurring twice a school term from 9:30 – 11am, Ready-Set-Go is a fun interactive morning for children 0 – school Age. Themed activities for the children and coffee and a chat for the parents.
Free

Scouts SA

www.sa.scouts.com.au

Maitland Scout Group

Cubs & Scouts Tuesdays 4.30-6pm

Chris Moustrides 0421 045 250

CHILD CARE OPTIONS

Family Day Care

Phone: 1300 551 890

Website: www.familydaycare.com.au

Services:

Family Day Care is an approved form of child care that is provided in the family day care educators own home. Family day care educators are early childhood education and care professionals, registered with a family day care service that is responsible for approving, supporting, training and advising its educators

Service area: Call the number above to find local vacancies

Occasional Care at Ardrossan Kindergarten

Phone: 8837 3284

Address: 26 West Tce, Ardrossan SA 5571

Website: www.ardrossankgn.sa.edu.au

Hours: check days with kindy

Occasional Care at Minlaton District Early Learning Centre

Phone: 8853 2301

Address: 1 West Tce, Minlaton SA 5575

Website: www.minlatonkgn.sa.edu.au

Rural Care at Maitland Children's Centre

Phone: 8832 2266

Address: 15 Kilkerran Tce, Maitland SA 5573

Website: www.maitlandkgn.sa.edu.au

Hours: Mon—Fri 8am—6pm

Rural Care at Yorketown Community Children's Centre

Phone: 8852 1780

Address: 27a Stansbury Rd, Yorketown SA 5576

Website: www.yorketownkgn.sa.edu.au

Hours: Mon—Fri 8am—6pm

DEPARTMENT FOR EDUCATION & CHILD DEVELOPMENT REGIONAL SERVICES

Aboriginal Services—DECD

Phone: 8821 2555

Address: 45 Taylor St, Kadina SA 5554

Services:

Jess Maynard- Aboriginal Community Education Manager

Sonya Rankine- Aboriginal Cultural Consultant

Rikki Iversen- Aboriginal Services Engagement Officer

Claudine Buckskin- Cluster Aboriginal Community Education Officer

Learning Together at Home

Phone: 0428 101 530

Address: PO Box 211, Yorketown SA 5576

Email: anna.phasey@sa.gov.au

Website: www.decd.sa.gov.au

Contact: Anna Phasey

Services:

Learning Together at Home is a home visiting program that supports families and guides parents in helping their children learn and develop through play. The program also provides advice to families about other early childhood services.

Service area: Yorke peninsula and Copper Coast

Hours: Wednesday/Thursday/ Friday

Referral: Contact above number for a referral form

Student Engagement & Community Partnerships Coordinator (DECD)

Phone: 8821 2555

Address: 45 Taylor St, Kadina SA 5554

Email: bridget.johns@sa.gov.au

Website: www.ican.sa.edu.au

Contact: Bridget Johns

Services:

Supporting partnerships between schools and community to assist disengaged and vulnerable students by;

- Brokering programs and services to support young people with significant barriers to learning
- Assisting a partnership approach; schools, families and communities working together
- Strengthening community networks, partners, resources and information for student learning success
- FLO coordination and flexible learning resources, tools and professional development

Service area: Yorke Peninsula and Mid North

Student Support Services—DECD

Phone: 8821 2555

Address: 45 Taylor St, Kadina SA 5554

Website: www.decd.sa.gov.au

Services:

Behaviour Support Coach

FOCUS: Learners K-12 with significant behavioural difficulties & their families.

FUNCTIONS:

- Functional assessments of behavioural issues, underlying causes, co-morbidity factors
- Individual, family, group, whole site level, direct support to sites
- Provision of advice, case work management & case management/coordination
- Capacity building of staff & families through training, modelling, information, resources, strategies.

Psychologist

FOCUS: Learners K-12 with developmental, cognitive, social, emotional, behavioural, physical difficulties & exceptional needs including giftedness & their families.

FUNCTIONS:

- Identification of developmental, cognitive, social, emotional, behavioural & physical functioning at individual/site/community level
- Individual, group, whole site, community learning and behaviour strategies/interventions, advice, reports and recommendations, case work management, case management/coordination
- Capacity building through provision of training, modelling, information, resources, strategies

Social Worker (Attendance & Engagement)

FOCUS: Learners K-12 with attendance, engagement & retention issues & their families.

FUNCTIONS:

- Identification of needs & data analysis
- Provision of advice at individual, group, site & community levels
- Case work management & case management/coordination
- More proactive approaches & whole site & community responses to attendance & engagement concerns

Social Worker (Family Focus)

FOCUS: Learners K-12, families and communities, sites requiring support for social, emotional wellbeing, mental health and critical incident response.

FUNCTIONS:

- Assistance at whole site, partnership and

community level to identify needs and plan proactive interventions regarding social and emotional wellbeing and mental health

Special Educators

FOCUS: Learners K-12 with additional needs, learning/hearing difficulties, developmental delay, disability, health needs, giftedness & their families.

FUNCTIONS:

- Analysis of learner needs & support requirements
- Direct hands on approach to support sites & families
- Provision of curriculum advice & planning, case work management, case coordination & management, facilities, special options
- Capacity building of staff & families through training, modelling, information, resources, strategies

Speech & Language Pathologist

FOCUS: Learners K-12 with communication difficulties and their families.

FUNCTIONS:

- Identification of communication difficulties at individual level, verification
- Intervention at individual and group level, communication strategies, contribute to learning plans, case work management, case coordination & management
- Capacity building of staff & families through training, modelling, information, resources, strategies

Special Educator (Hearing)

FOCUS: Learners K-12 who are deaf or hard of hearing & their families.

FUNCTIONS:

- Identification of needs in educational contexts
- Provision of specialist advice at individual, group, whole site levels.
- Contribute to NEP, provide reports and recommendations (hearing devices, acoustic environment), case work management (active, review, close), case coordination
- Development and provision of training and development to staff and families; modelling and provision of information strategies and resources

Service area: DECD Schools on the Yorke Peninsula

Hours: Mon-Fri 9am-5pm

Referral: Via School only. Pre-referral with service provider and electronic referral by school through EDSAS or Early Years System.

DISABILITY SUPPORT

Disability SA

Phone: 88210200

Address: 4A Draper St, Kadina SA 5554

Website: www.dcsi.sa.gov.au

Novita Children's Services—Regional Service

Phone: 82438343

Address: 171 Days Rd, Regency Park 5010

Website: www.novita.org.au

YP Leisure Options

Phone: 8853 3830

Address: Minlaton Town Hall, Minlaton SA 5575

Email: leisure.admin@yorke.sa.gov.au

Website: www.yorke.sa.gov.au

Services:

The Yorke Peninsula Council is committed to delivering high quality, responsive and customer focused services. The YP Leisure Options service provides a range of social and recreational activities for eligible members in the Council area. Leisure Options delivers centre-based activities, social support and transport to people who have age related health issues and for younger people with disabilities.

Service area: Yorke Peninsula Council Area

Referral: Criteria—reside in the Yorke Peninsula Council area and is a younger person with a disability over 16 years or is a person with age related health issues or is experiencing social isolation and may have reduced support from family.

LIBRARIES

Ardrossan Community Library

Phone: 8837 4174

Address: 14 Second St, Ardrossan SA 5571

Website: www.libraries.sa.gov.au/yorke

Central Yorke Community Library

Phone: 8832 2805

Address: Pioneer Rd, Maitland SA 5573

Website: www.libraries.sa.gov.au/yorke

Minlaton Community Library

Phone: 8853 2339

Address: 2 North Tce, Minlaton SA 5575

Website: www.libraries.sa.gov.au/yorke

Yorke town School Community Library

Phone: 8852 1647

Address: Yorketown Area School
Depots @ Corny Point, Edithburgh,
Marion Bay, Stansbury & Warooka

Website: www.libraries.sa.gov.au/yorke

Services:

Friends of Yorketown Library, Bounce & Rhyme, Public access computers, wifi, cake & coffee.

Service area: Corny Point, Edithburgh, Marion Bay, Stansbury, Warooka & Yorketown

PARENTING SUPPORT

UnitingCare Wesley Country SA—Children and Parent Support Services

Phone: 8821 3019 or 0458 690 089

Address: 9 Hay St, Kadina SA 5554

Email: andrea.ford@ucwcsa.org.au

Website: www.ucwcsa.org.au

Contact: Andrea Ford

Services:

The program aims to assist and support Parents to develop skills needed to become actively involved in their day to day lives and provide Professional speakers from the Community to advise and give updated information to them and bring awareness of the Services and Agencies the Community provides.

The Copper Coast Parenting Program provides Crèche facilities with a structured program and qualified staff to assist children in readiness for Pre-school and School. We cover Parenting Skills, Hygiene, Health and Well Being, Healthy Eating and healthier food options, Financial Advice, Budgeting and free Crèche is available. Parents / Families are referred out to relevant agencies as per their individual needs.

Service area: Yorke Peninsula

Hours: Monday, Wednesday and Thursday; depending on programs being run. Contact site for current details.

Access: We aim to help disadvantaged families and carers with young children, single parent families and those at risk.

Fees: This service is free.

Referral: Self referral, Agency services, parents and carers.

UnitingCare Wesley Country SA—JET Crèche

Phone: 8821 3019 or 0458 690 089

Address: 9 Hay St, Kadina SA 5554

Email: andrea.ford@ucwcsa.org.au

Website: www.ucwcsa.org.au

Contact: Andrea Ford

Services:

We provide a free crèche to sole or disadvantaged parents who have the opportunity to participate in workshops for their self development and/or

employment skills.

Service area: Copper Coast

Hours: Monday, Wednesday and Thursday excluding public holidays, depending on programs being run. Contact site for current details.

Access: Children under 5 years of age. Parents receiving parenting payment single or partnered are eligible.

Fees: This service is free.

Referral: Via workshops or self referral.

Women's and Children's Health Network Parent Helpline

Phone: 1300 364 100

Website: www.cyh.com.au

Services:

The Women's and Children's Health Network (WCHN) Parent Helpline provides telephone information and support at any time 7 days a week (calls received between 7.15am - 9.15pm will be answered by local Parent Helpline staff; calls received outside these hours will be automatically redirected to the national *healthdirect* helpline).

- It is available to parents of children from birth to 12 years who live anywhere in South Australia.
- It provides information about health, behaviour and relationships for parents and people working with children and young people.
- It is able to provide information to callers on where to go for further help.
- Calls are confidential and you don't have to give your name unless you wish to.
- Parent Helpline staff have an information database based on the latest research, so they can give you the most up-to-date information when you call.
- Staff are qualified nurses, social workers, community health workers and selected volunteers. All staff receive ongoing training and support.

Some examples of the information available from the WCHN Parent Helpline are:

- **Health:** head lice, infectious diseases, immunisation, teething, bedwetting, cold sores, gastro and fevers.
- **Behaviour:** aggression, sibling rivalry, problem solving, toilet training, sleep, lying, stealing, unsettled babies, school refusal, bullying.
- **Nutrition:** feeding babies, fussy eaters, general nutrition information.
- **Parenting:** building self esteem, grief and separation, resources for counselling, stepfamilies, child protection issues.
- **Parents:** postnatal depression, pregnancy,

mastitis, coping with parenting, support.

SCHOOLS & PRESCHOOLS

- **Ardrossan Area School**
8837 3025; 14 Second St, Ardrossan SA 5571
www.ardas.sa.edu.au
- **Ardrossan & Districts Community Kindergarten**
8837 3284; 26 West Tce, Ardrossan SA 5571
www.ardrossankgn.sa.edu.au
- **Curramulka Primary School**
8854 2102; Sixth St, Curramulka SA 5580
www.curryps.sa.edu.au
- **Edithburgh Primary School**
8852 6117; Giles Tce, Edithburgh SA 5583
www.edithbhps.sa.edu.au
- **Maitland Area School**
8832 2613; Junction Rd, Maitland SA 5573
www.maitlandas.net
- **Maitland Children's Centre & Rural Care**
8832 2266; 15 Kilkerran Tce, Maitland SA 5573
www.maitlandkgn.sa.edu.au
- **Maitland Lutheran School**
8832 2288; 23 Clinton Rd, Maitland SA 5573
www.mlschool.com.au
- **Minlaton District Early Learning Centre**
8853 2301; 1 West Tce, Minlaton SA 5575
www.minlatonkgn.sa.edu.au
- **Minlaton District School**
8853 2346; 2 North Tce, Minlaton SA 5575
www.minlatonds.sa.edu.au
- **Point Pearce Aboriginal School**
8836 7210; Parrys Tce, Point Pearce SA 5573
www.ptpearceab.sa.edu.au
- **Port Vincent Primary School**
8853 7027; Minlacowie Rd, Port Vincent SA 5581
www.vincentps.sa.edu.au
- **St Columba's Memorial School**
8852 1461; 55 Warooka Rd, Yorketown SA 5576
www.scmsyorketown.com
- **Stansbury Primary School**
8852 4286; North Tce, Stansbury SA 5582
www.stansburyps.sa.edu.au
- **Warooka Primary School**
8854 5034; 47 Main St, Warooka SA 5577
www.warookaps.sa.edu.au
- **Yorketown Area School**
8852 1233; Stansbury Rd, Yorketown SA 5576
www.yorketnas.sa.edu.au
- **Yorketown Community Children's Centre**
8852 1780; 27a Stansbury Rd, Yorketown SA 5576
www.yorketownkgn.sa.edu.au

SPORTING CLUBS

(Additional sporting clubs exist and will be added to the online version—below groups provided information to the Southern Yorke Community Partnerships Steering Group)

Archery

Southern Yorke Peninsula Field Archery Club

Phone: 0468 641 064

Website: www.bowhunters.org.au

Contact: Merve Oakley

Basketball

SYP Basketball Association

http://www.foxsportspulse.com/club_info.cgi?c=1-4538-57619-0-0

Brentwood

Curramulka Basketball Club

Contact: Emma Reade

Phone: 8853 1183

Address: PO Box 8, Curramulka SA 5580

Email: gyekreade@internode.on.net

Facebook Page: search "Curramulka Basketball Club"

The Curramulka Basketball Club runs between October and March with trainings on Tuesday nights and matches on Friday nights at Minlaton

East Coast Basketball Club

Phone: 0419 512 501

Email: lisacooney@cheethamsalt.com.au

Edithburgh Basketball Club

Minlaton Basketball Club

Port Victoria Basketball Club

Phone: 0427 322 089/ 0407719268

Stansbury Basketball Club

Western United Basketball Club

Yorketown Basketball Club

Bowls

SYP Bowls Association

Ardrossan Bowling Club

Phone: 8837 3096

Address: Oval Tce (PO Box 99), Ardrossan SA 5571

Email: ardbowls@internode.on.net

Website: www.ardrossanbowls.com.au

Curramulka Bowling Club

Contact: Men – Des Short
Women – Yvonne Dodd
Phone: Des Short 8854 2251
Yvonne Dodd 8838 2433

The Curramulka Bowling Club runs between October and March. Practices are on Thursday night with Ladies playing Thursday's and the Men playing Saturday's.

Edithburgh Bowling Club

Minlaton Bowling Club

Port Victoria Bowls Club

Phone: 8834 2321
Address: Kuhn Tce, Port Victoria SA 5573

Port Vincent Bowling Club

Contact: Nathan Marks
Phone: 8853 7362
Address: Talbot Road, Port Vincent SA 5581

Services:

Pennant matches, inter-club competitions, championships – coaching available, night owls for learners, social teas, new members welcome, season October/April, men's pennants – Saturdays, ladies' pennants – Thursday

Stansbury Bowling Club

Cricket

Southern Yorke Peninsula Cricket Association

Ardrossan Cricket Club

Phone: Scott Bockman 0427 519 628

Arthurton Cricket Club

Curramulka Cricket Club

Contact: Jamie Agnew
Phone: 88538101

Maitland Cricket Club

Port Victoria Cricket Club
88342036 and 0419853 575

Yorke town Cricket Club

Stansbury Cricket Club

Corny Point Cricket Club
Honiton Cricket Club

Community Clubs

Ardrossan & Districts Community Club

Phone: 8837 3104
Address: Maitland Rd, Ardrossan SA 5571
Contact: For venue Bookings—Scott Bockman
0427 519 628

Stansbury Sports & Community Club

Incorporating management of Basketball, Cricket, Netball, Tennis & Soccer Clubs
South Terrace (Cnr Weaver St) , Stansbury SA 5582

Curramulka Community Club

Phone: 8854 2190
Contact: Catherine Watters – Secretary
The Curramulka Community Club offer catering services and hire of the club rooms.

Football

Yorke Peninsula Football Association

- **Ardrossan Football Club**
David Stacey 0417 816073
David.Stacey@cheethamsalt.com.au
- **Central Yorke Peninsula Cougars Football Club** (Maitland & Arthurton)
Stephen Marks 8832 2765
www.cyfc.com.au
- **CMS Crows Football Club**
Curramulka, Minlaton and Stansbury
www.cmscrows.com
- **Southern Eagles Football Club**
Yorke town, Edithburgh, Warooka

Golf

<http://www.golfsa.com.au/>

Ardrossan Golf Club

Phone: 88373 764
Email: ardgolf@bigpond.com
Website: www.ardrossangolf.com.au/club/

Curramulka Golf Club

Contact: Men – David Short
Women Vicki Parsons
Phone: David Short 08 88542161
Vicki Parson 08 88542112

The Curramulka Golf Club runs between April and September. Ladies golf is played on Tuesday mornings and the Men's golf is played on Saturday afternoon's.

Edithburgh Golf Club

Maitland Golf Club

Phone: Lindsay Harper 8832 2910

Minlaton Golf Club

Port Victoria Golf Club

Phone: 8834 2110

Port Vincent Golf Club

Phone: 8853 7338

Address: Access is 5km north of the town along the Old Coast Road.

Services:

There are 9 black soil greens with no bunkers a few gentle doglegs elevated tee beds and the last 3 holes has the St Vincent Gulf on your left. Fees are \$5. The course is closed from October until the end of February. Season April – Sept/October. Men's matches – Saturdays, ladies' matches – Tuesdays, club competitions – pennants & midweek

9 Hole Putt Putt Golf

Phone: 8853 7011

Address: located on the back beach at Port Vincent Caravan Park & Seaside Cabins - report to the Park Office at 12 Minlacowie Road, Port Vincent SA 5581

Services:

Anyone is welcome to play.

Fees: Admission is \$5 each or \$15 per family.

Stansbury Golf Club

Warooka Golf Club

Wool Bay Golf Club

Yorketown Golf Club

Website: www.yorketowngolf.com.au

Gun Clubs

Maitland Rifle Club

Contact: Brad Renfrey

Phone: 8832 2744

Hours: Every Saturday

Website: www.riflesa.asn.au

Southern Yorke Peninsula Gun Club

Phone: 0409 089 523

Website: www.claytarget.com.au/component/contact/54-south-australian-contacts/258-southern-yorke-peninsula-gun-club

Hockey

www.hockeysa.com.au

Yorke Peninsula Hockey Association

[https://sitedesq.imgstg.com/site/index.cfm?](https://sitedesq.imgstg.com/site/index.cfm?fuseaction=display_main&OrgID=11573)

[fuseaction=display_main&OrgID=11573](https://sitedesq.imgstg.com/site/index.cfm?fuseaction=display_main&OrgID=11573)

Arthurton Hockey Club

Ardrossan Hockey Club

Phone: 8837 4171

Email: holdsworths11@bigpond.com

Address: PO Box 160 Ardrossan SA 5571

Maitland Hockey Club

Phone: 0438840273

Contact: Leanne Edwards—President

Email: maitlandhockeysa@gmail.com

Minlaton Hockey Club

Indoor Soccer

YP Futsal Indoor Soccer

www.ypfutsal.org.au

Karate

National Karate Academy

Contact: Instructor: Paul Benyo

Address: Maitland Area School Gym

Hours: Thursday 6.30pm Juniors, 7.30pm Seniors

Kayaking

Available for hire at Port Vincent Outdoors <http://portvincent.org.au/shops/port-vincent-beach-sport/> (others may be aware of more places)

Motorbikes

Kadina Motocross Club kadinamotocrossclub.com/

Music/Theatre

Maitland Music and Arts Club

Maitland Youth Theatre

Loose Cannoz Theatre Group—Ardrossan

Leanne Cane 88373065

Netball

Yorke Peninsula Netball Association

- **Ardrossan Netball Club**
Kerry Lutze 88373756
- **Central Yorke Netball Club**
Janine Burrows 0439 897 087
www.cyfc.com.au
- **CMS (Curramulka, Minlaton and Stansbury) Crows Netball Club**
www.cmscrows.com
- **Southern Eagles Netball Club**
www.southerneagles.com.au

Southern Yorke Peninsula Netball Association

Southern Yorke Peninsula Netball Association
(Friday nights)

<http://sa.netball.com.au/associations/lower-north-region/southern-yorke/>

President: Teresa Haywood 0417 808 742
Secretary: Karen Parsons,
Address: PO Box 78, Curramulka SA 5580
Email: sypnetball@internode.on.net
Phone: 8854 2226 or 0439 710 323

Polocrosse

www.polocrosse.org.au

Search Facebook for Yorke Peninsula polocrosse

Pony Club SA

www.ponyclub.asn.au

0458 031 775

Southern Yorke Peninsula Pony Club
sypponyclub1960@hotmail.com

Sailing

Point Turton Sailing Club

www.yachtingaustralia.com.au/db/clubdisplay.asp?sp=10097-5-SA&ID=516300

Port Vincent Sailing Club

Phone: 0428 292315
Contact: Greg Hackett (Commodore)
Address: Marine Parade, Port Vincent
Services:

Season commences October long weekend, junior program, races Sunday afternoon during summer. Visitors are always welcome. Turn up and introduce yourself at noon if you want to learn how to sail (any age), would like a ride on a yacht or a quiet drink in the afternoon.

Surfing

www.surfingaustralia.com/sa/

Neptunes Surf School

<http://www.neptunes.net.au/lessons.html>

Yorkes Junior Surf Club

<https://brc.surfingaustralia.com/clubs/yorkes-junior-surf-club>

Table Tennis

Contact: Gilbert Liebelt 0427 232 020

Taekwondo

www.taekwondoaustralia.com.au

Leslie Lund 0488004394

Tennis

Southern Yorke Peninsula Tennis Association

Ardrossan Tennis Club

Phone: 88373 408
Address: Maitland Rd, Ardrossan SA 5571

Curramulka Tennis Club

Contact: Rebecca Brown
Phone: 8853 1119

Facebook Page: search "Curramulka Tennis Club"

The Curramulka Tennis Club runs between October and March. Trainings are on Thursday nights and matches are played on Saturday's

Koolywurtie Tennis Club

Minlaton Tennis Club

Contact: Josh Coombe, Secretary
Phone: 8853 2257
Address: North Terrace, Minlaton SA 5575
Email: jkcoombe@bigpond.com
Web page: Find us on Facebook by searching: Minlaton Tennis Club

Yorke Town Tennis Club

Yoga

Minlaton Yoga Studio specialising in Dru Yoga

Phone: 0427 532 519
Address: 48 Main St, Minlaton SA 5575
Website: Search Facebook for Minlaton Yoga Studio
Email: traciabraham@me.com
Contact: Traci Abraham
Services:

Based upon soft flowing movements, controlled breathing and visualization, Dru Yoga is both a graceful form of exercise and a potent means of stress relief. With its foundations set firmly in ancient yogic tradition, Dru Yoga is a style that has been passed down through the generations. It works on both the body and the mind, rejuvenating the soul, strengthening core stability, building a heightened feeling of positivity and empowerment and improving overall strength and flexibility.

Lisa Hendry—Dru Yoga Teacher

Phone: 0409 526 391
Address: Yorketown & Edithburgh
Website: www.infiniteinspirationwithin.com.au
Email: lisa@infiniteinspirationwithin.com.au
Contact: Lisa Hendry
Services:

Dru Yoga is based upon soft, flowing movements,

controlled breathing and visualization. Dru Yoga is both a graceful form of exercise and a potent means of stress relief. With its foundations set firmly in ancient yogic tradition, Dru Yoga is a style that has been passed down through the generations. It works on the body and the mind, strengthening core stability and building a heightened feeling of positivity and empowerment. Designed to be practised by people of all abilities, all fitness levels and all age groups, Dru is a style of yoga that can be quickly dipped into or learnt in more depth over a lifetime.

TRAINING PROVIDERS

Accustom Consulting (Driving School & Training Centre)

Phone: 88213340 or 0438253575
Address: 25 Taylor St, Kadina SA 5554
Email: accustomconsulting@gmail.com
Website: www.accustomconsulting.com.au
Contact: Angie Tucker, Manager
Services:

Driving school services - Learn Safe Drive Safe (getting your L's), car (logbook, VORT & FREE Keys to Drive lessons), truck from LR to HC, Defensive Driving, 4 Wheel Drive, Quad Bike and Forklift. Training centre services - a range of subsidised courses and programs are regularly available as well as Whitecard, First Aid courses, Child Safe Environment, RSA, Computing and more.

Service area: SA regional and some Adelaide regions

Hours: Office 9-5 weekdays (except public holidays) some training available 7 days/week

Fees: Fee free opportunities on enquiry

Referral: Contact us to discuss your options

MADEC Employment and Training

Phone: 8821 6000
Address: 13 Taylor St, Kadina SA5554
Email: sbarry@madec.edu.au
Website: www.madec.edu.au
Contact: Sue Barry, Team Leader Training
Services:

Madec is a not for profit community based organisation. job active provider for people requiring income support from Centrelink and registered Training Organisation providing accredited training in a range of qualifications.

Service area: Yorke Peninsula, Mid North, North West Country

Hours: 8.30am-5.00pm

Fees: no fees for job active services, course fees dependant on pathway chosen

Referral: can direct refer depending on persons particulars and situation or can be referred by Centrelink.

Re-engage Youth Services

Phone: 8326 6540
Address: 61 Beach Rd, Christies Beach SA 5165
Email: admin@re-engage.com.au
Website: www.re-engage.com.au
Services:

Re-Engage Youth Services provides a range of services including program delivery and design, assertive outreach case management, professional development, federally approved student welfare workers and course brokerage. See www.re-engage.com.au/services for specific programs run by Re-engage Youth Services.

Service area: Various public schools across the Yorke Peninsula

Hours: Office hours - 9am-5pm Monday to Friday

Fees: School funded

Referral: School referral necessary

Regional Skills Training (RST)

Phone: 8835 1362
Address: PO Box 134, Arthurlton SA 5572
Email: carolineg@regionalskillstraining.com
Website: www.regionalskillstraining.com
Contact: Caroline Graham—CEO
Services:

RST Training provides training to an increasing number of business managers and students wishing to expand their management and knowledge in the rural and regional sectors of Australia.

TAFE SA—Kadina Campus

Phone: 8821 0400
Address: 1a Doswell Tce, Kadina SA 5554
Website: www.tafesa.edu.au/campuses/yorke-northern-regions/kadina

Tauondi College

Phone: 8240 0300
Address: 1 Lipson St, Port Adelaide SA 5015
Services:

Training & Development; Providing TAFE course; Cultural Training; Aboriginal exclusive training organisation

Yorke Youth Services

Phone: 8821 4155
Address: 1/3 Forster St, Kadina SA 5554
Email: info@yorkeyouth.com.au
Website: www.facebook.com/yys.yorke
Contact: Beth Cock—Business Manager
Services:

Yorke Youth Services (YYS) provides individual case management to at risk students enrolled under the Flexible Learning Options (FLO) program. YYS also

ABORIGINAL SPECIFIC SUPPORT

Aboriginal Legal Rights Movement

Phone: 1800 643 222

Address: 321-325 King William St, Adelaide SA 5000

Email: info@alm.org.au

Services:

ALRM Services are significantly based upon criminal law practice representing the clients in South Australia with over 15 lawyers who provide advice and court representation to persons charged with criminal offences. The Criminal Law Practice provides representation, prison advice and an after-hours custody advice service. The Criminal Practice Division represents persons charged with criminal offences across all jurisdictional levels from the Youth Court, Magistrates Court, District and Supreme Courts through to the Court of Criminal Appeal and the High Court of Australia. The service extends from representation at police interview (through the afterhours custody answering service), to advice and representation through committal, trial, sentencing, appeals before the courts and appearances before the Parole Board.

Aboriginal Prisoners and Offenders Support Services

Phone: 8223 3177

Address: 19-23 Cypress St, Adelaide SA 5000

Services:

The intent and purpose of this program is to provide prevention and diversionary services to male and female Aboriginal prisoners, offenders and those at risk, in the Adelaide, Mount Gambier, Port Augusta and Port Lincoln areas. APOSS is also committed to providing support to the families of those incarcerated

COUNTRY FIRE SERVICE (CFS)

www.cfs.sa.gov.au

Volunteers always welcome

- Ardrossan CFS
- Balgowan CFS
- Brentwood CFS
- Corny Point CFS
- Curramulka CFS
- Edithburgh CFS
- Maitland CFS
- Marion Bay CFS
- Minlaton CFS
- Port Clinton & District CFS
- Port Victoria CFS
- Port Vincent CFS
- Stansbury CFS
- Warooka CFS
- Weetulla/Nalyappa CFS

- Yorketown CFS

FAMILIES SA

Phone: 8828 0400 or

Toll Free 1800 804 550

Address: 10 Digby St, Kadina SA 5554

Website: www.families.sa.gov.au

Services:

Families SA is part of the Department for Education and Child Development. Our primary area of concern is the protection of children – "keeping them safe". Our vision is for a future where children, young people and families are safe, supported and connected to the future. Our work includes:

- Protecting children from abuse and harm
- Supporting families to reduce risk to children
- Providing alternative care for children and young people when home is no longer an option
- Working with young people who break the law
- A commitment to reconciliation and providing culturally appropriate services.

Service area: Mid North, Copper Coast and Yorke Peninsula

Hours: Open to the public: Mon, Wed, Fri 8:45am to 5pm

Referral: To make a notification of suspected child abuse or neglect, please contact

Child Abuse Report Line 13 14 78

FAMILY SUPPORT

UnitingCare Wesley Country SA—Mid North Family Support Program:

Phone: 8821 0300 or 0417 972 957

Address: UCWCSA 8 Digby St, Kadina SA 5554

Email: Kerrie.hopkins@ucwcsa.org.au

Website: www.ucwcsa.org.au

Contact: Kerrie Hopkins

Services:

We support families while they work through domestic and family problems with the main focus being to support parents in their efforts to care for their children.

Service area: Yorke Peninsula

Hours: Mondays and Wednesdays 9—5pm

Access: We can assist any parent or family who is having difficulties in coping with the challenges of parenting and caring for their children.

Fees: This service is Free.

Referral: Self referral or from any agency with the client's permission.

UnitingCare Wesley Country SA— Reunification

Phone: 8821 0300 or 0400 252 758
Address: UCWCSA 8 Digby St, Kadina SA 5554
Email: trudy.clift@ucwcsa.org.au
Website: www.ucwcsa.org.au
Contact: Trudy Clift
Services:

Provides support in the process of reconnecting children in out of home care with their families by means of a variety of services and supports to the children, their families and their out of home carers. Main services provided: Case work and case management, practical and structured in home assistance and Parenting skills development.

Service area: Barossa, Far North, Yorke Peninsula and Mid North

Hours: 9am to 5pm Mon—Fri

Access: Families in contact with the statutory child protection and care system

Referral: All referrals are received through Families SA

UnitingCare Wesley Country SA— Targeted Intervention

Phone: 8821 0300 or 0400 252 758
Address: UCWCSA 8 Digby St, Kadina SA 5554
Email: trudy.clift@ucwcsa.org.au
Website: www.ucwcsa.org.au
Contact: Trudy Clift
Services:

Responding to the assessed need of the children, young people and their families in the early stages of their contact with the statutory child protection system, where the risk of unnecessary and preventable placement of children into care are prevalent, and the absence of intervention is likely to result in ongoing and more serious child protection issues. Main services provided: •- Case work and case management, - Practical and structured in home assistance, - Parenting skills development, and - Links to community networks/ advocacy and referrals.

All clients can be linked in to or referred to other community services that are available in their area eg: - Parenting Groups, - Accommodation and Support Services, - Anti poverty support or financial counselling, - Drug and alcohol support services, - Child and mental health services.

Service area: Barossa, Far North, Yorke Peninsula and Mid North

Hours: 9am to 5pm Mon—Fri

Access: Families in contact with the statutory child protection and care system

Referral: All referrals are received through Families SA

UnitingCare Wesley Country SA— Yorke and Mid North Domestic Violence Service

Phone: 8821 0300 or 0428 326 527 (duty worker)
Address: UCWCSA 8 Digby St, Kadina SA 5554
Website: www.ucwcsa.org.au
Contact: Michelle Cameron and Donna Barnes
Services:

This service provides support to women and children in the Yorke Peninsula and Mid North areas that are affected by domestic violence.

We cover Mid North (Port Pirie), Lower North (Clare) and Yorke Peninsula (Kadina)

Service area: Yorke Peninsula

Hours: 9am to 5pm Mon—Fri. For emergencies outside of these hours contact Gateway DV on 1800 800 098 or alternatively the on call duty worker on 0428 326 527.

Access: We help women and children who: are at risk of physical, emotional, spiritual, psychological, financial, sexual or social abuse due to domestic violence. Have no other appropriate safe accommodation options.

Fee: This service is free.

Referral: Self, family, friends, UCWCSA programs and other service providers.

MISCELLANEOUS

Victim Support Service Inc.

Phone: 8633 4888
Address: 106 B Main Rd (P.O. Box 869), Port Pirie SA 5540
Email: pirie@victimsa.org
Website: www.victimsa.org
Contact: Jennifer Lewis – Victim Support Coordinator – Port Pirie

Services:

We are a not for profit community based organisation. We are a service for adults. We provide support to victims of crime and their families. We provide information re Victim's Rights, Victims' of Crime Compensation, Support Services, the impact of crime and being a witness in court. We have a wide range of fact sheets (available to download from our website). We also have a resource centre and a free borrowers club. We have an enquiry line – 1800 VICTIM (1800 842 846). We provide Court Companion Support, counselling and assistance to prepare a Victim Impact statement.

Service area: Port Pirie region (which includes Yorke Peninsula)

Hours: Monday to Thursday. 8.30 am to 4.30pm

Fees: We provide a free service. We will also support victims who do not wish to report a crime to police

Referral: Self referral or via agency

SA POLICE

Police-Emergency 000
Police-Assistance 131 444
Crime Stoppers 1800 333 000
Website: www.sapolice.sa.gov.au

Local Police Stations

Ardrossan

Phone: 8837 3017
Address: 6 Fourth St, Ardrossan SA 5571

Edithburgh

Phone: 8852 6024
Address: Edith St, Edithburgh SA 5583

Kadina

Phone: 8828 1100
Address: 58 Graves St, Kadina SA 5554

Maitland

Phone: 8832 2621
Address: 26 Elizabeth St, Maitland SA 5573

Minlaton

Phone: 8853 2100
Address: 20 Main St, Minlaton SA 5575

Port Victoria

Phone: 8834 2039
Address: Lawhill St, Port Victoria SA 5573

Stansbury

Phone: 8852 4205
Address: 33 Towler St, Stansbury SA 5582

Yorketown

Phone: 8852 1100
Address: 22 Minlaton Rd, Yorketown SA 5576

STATE EMERGENCY SERVICES

132 500 - for storm and flood response

Maitland

Phone: 8832 2392 (enquiries only)
Address: Rogers Tce, Maitland SA 5573

Warooka

Phone: 8854 5299 (enquiries only)
Address: cnr Fifth St & Sturt Bay Rd,
 Warooka SA 5577