



HMCV – PEPR Information
11 April 2016

Overview of Rex's PEPR

- Rex has adopted the November 2015 MG2b Guidelines for our PEPR (latest guidelines)
- PEPR will have the following format;

Section	Title
1	Declaration of accuracy
2	Description of the environment
3	Description of the mining operations
4	Consultation
5	Environmental outcomes, strategies, criteria and monitoring
6	Operator capability
7	Lease/licence
Appendices	Supporting documents including management plans <i>(note: 'Social Management Plan' submitted separately for approval – similar to the 'Community Engagement Plan')</i>

Rex's PEPR – Section 1 & 2

Section	Title	Information in the section
1	Declaration of accuracy	Signed statement
2	Description of the environment	Any changes to the environment, or updates to information about the environment, since the MLP.

Rex's PEPR – Section 3

Section	Title	Information in the section
3	Description of the mining operations	All activities planned on the ML, EML and MPL including; <ul style="list-style-type: none"> • exploration activities • recovery of minerals • beneficiation • rehabilitation

- Technical information about the mining process is informed by mining experts based on modern mining techniques used around the world.
- Information about the Yorke Peninsula which is required for Section 3 will be sourced from the HMCV and other groups with knowledge of the Yorke Peninsula.

Rex's PEPR – Section 3 – HMCV input

Direct input into;

- Blasting times i.e. what time of day. (Dust, Noise, Light & Blasting WG)
- Progressive rehabilitation & closure planning and final use of land post mining (Mine closure WG)
- Accommodation strategy (Accommodation & Tourism WG)

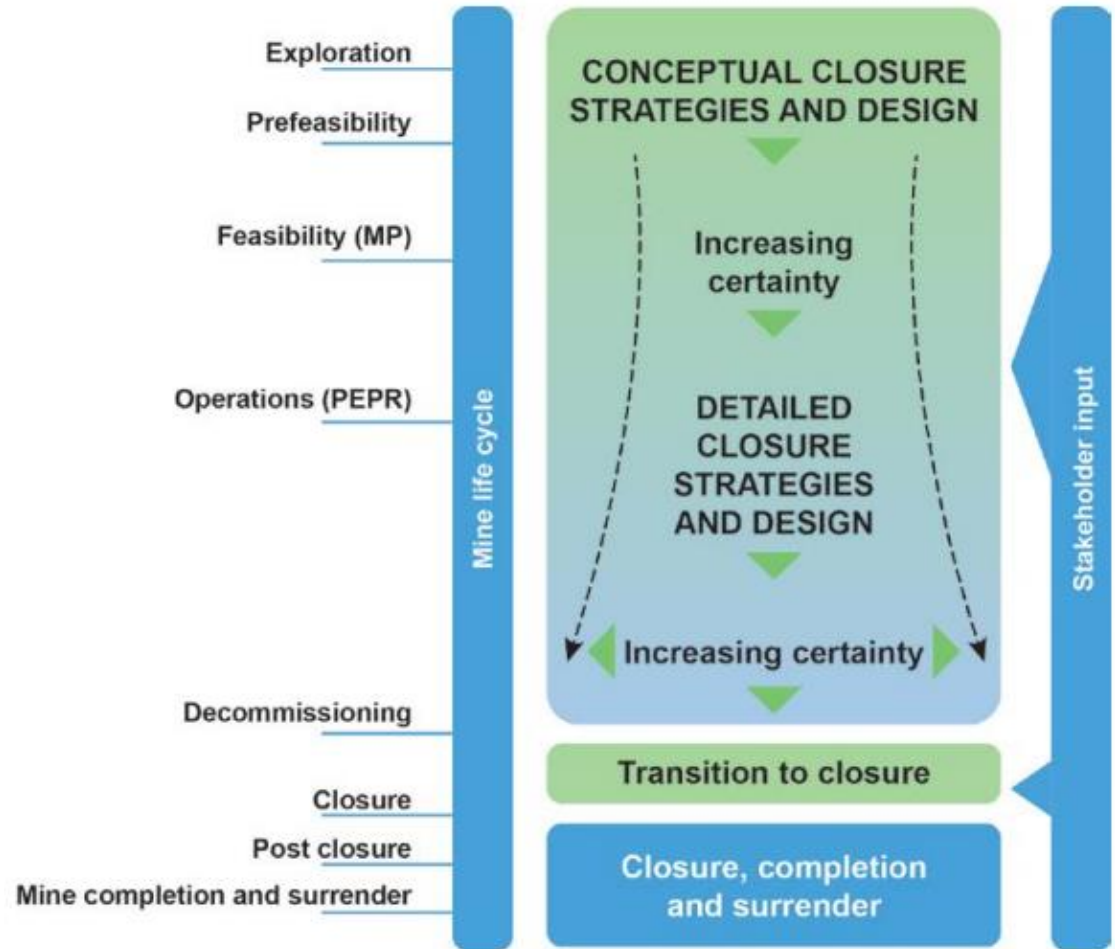


Figure 3 Planning for integrated mine closure.

Rex's PEPR – Section 3 – HMCV input

Example table – Current and future works and PEPR review schedule

Current and future works/tasks	Start date	Completion date	Planned date for submission to the department	Responsibility
Current task 1 – Field trial for TSF cover design	03/2015	05/2016		
Future task 2	01/2015	04/2016		
Future task 3	06/2016	08/2016		
Future task 4	08/2016	12/2016		
PEPR review – Linked to completion of field trial	12/2016	04/2017	April 2017	
Future task 5				
Future task 6				
PEPR review				

As closure plans evolve throughout the life of a mine, future work is planned to gain certainty, for example:

- Crop trials on slopes
- Native vegetation trails

Rex's PEPR – Section 4

Section	Title	Information in the section
4	Consultation	Demonstrate engagement with relevant stakeholders on the development of the PEPR, mining operations, the management of identified environmental impacts, and ongoing closure planning which includes:

Engagement through:

- PEPR Action Plan in Community Engagement Plan (CEP)
- Process for managing complaints – ‘Complaints Register’ and ‘Communications Management Plan’ – some areas tasked to “Agriculture & Farm Management WG” in relation to communicating with adjacent land owners in managing land (more work to do)

Rex's PEPR – Section 5

Section	Title	Information in the section
5	Environmental outcomes, strategies, criteria and monitoring	States how Rex will meet and report on lease conditions including; <ul style="list-style-type: none">• Control and management strategies & uncertainty assessment• Measurement criteria – what, how, where, when, baseline• Operator compliance monitoring plan• New environmental impacts

- This is how the compliance against the lease conditions will be monitored and reported to all stakeholders; Regulators (DSD & EPA) & community.
- Will detail where the monitors will be located – “Air Quality, Noise, Light and Blasting WG”, regulators and adjacent landowners will be consulted.

Rex's PEPR – Section 6 &7

Section	Title	Information in the section
6	Operator capability	Processes, procedures & management systems including; <ul style="list-style-type: none"> • Corporate policy • Quality • Emergency response • Communication processes • Resourcing
7	Lease/licence	Where there are lease or licence conditions that are not environmental outcomes are addressed in the PEPR.

- Outlines Rex's policies and procedures to DSD
- States in a table where conditions have been addressed – check list.

Other input from community as per CEP for PEPR

Knowledge	Related PEPR section/supporting Management Plan
Regional Development Australia & DSD & Small Business	Regional Employment MP Business Development MP
DEWNR/NRM & Conservation Action Planning	Native Vegetation MP - Significant Environmental Benefit (SEB) PEPR Section 3 - Mine Completion
SA Water	PEPR Section 3 – Water Sources
YP Council	Roads (opening and closing), septic system for site, etc.
SA Power Networks	SWER Line (19 kV powerline) 33kV powerline along Highway
Adjacent Landowners	Monitoring locations (specific requirements i.e. distance from roads, houses, site boundary, etc.)
Indigenous	Heritage clearances.